

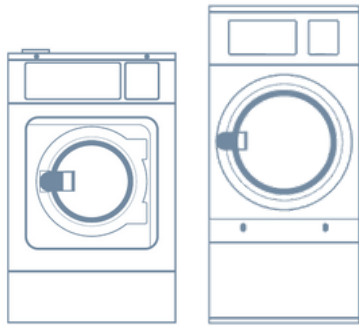
SUSTAINABLE
SOLUTIONS AND
INNOVATIONS IN
LAUNDRY

HOTEL AND CATERING

WWW.DANUBE-INTERNATIONAL.COM

 **DANUBE**
ONNERA GROUP

EFFICIENCY...



and sustainability for an
eco-friendly balance.



Water

Our machines incorporate technology to manage water recovery, guaranteeing optimum use of water in every wash cycle.



Energy

Energy optimisation is an essential part of laundry management to ensure greater savings and efficiency.



Chemicals

Adapting the quantity of detergent to the load and the laundry means extra savings, better laundry care and respect of the environment.



Time

By adjusting process times appropriately, laundry efficiency and profitability are increased.



VITY



DANUBE
online

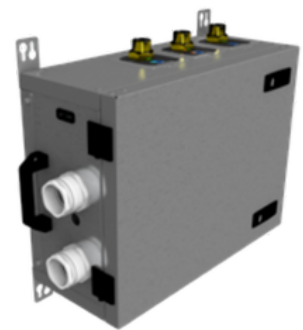
INTELLIGENT LAUNDRY

by Danube

Efficient machines + solutions

The all-in-one concept to optimize all your laundry operations. Combined with the **LEMS by Onnera** system, it allows you to :

1.- collect precise data from different **LEMS Counter Box** installed on each machine (water, gas and electricity consumption in real time),



2.- retrieve this data using the **LEMS Brain** pulse concentrator which automatically transmits it to the **DANUBE ONLINE** platform via IoT.



All you have to do is log in to your account on the DANUBE ONLINE platform to manage your laundry and generate personalized reports on efficiency and hygiene.



Precise management



Optimized efficiency



Controlled hygiene

LAUNDRY IN THE HOTEL / CATERING SECTOR

One of the most important business areas for us is undoubtedly the design and manufacturing of innovative laundry equipment and solutions for hotels and restaurants.

All hotel companies that have a significant daily workload are considering the possibility, if they have not already done so, of installing their own integrated laundry.

Having employee uniforms and flat linen processed daily, depending on the number of people per service, may represent a significant expense. This is why we recommend hotels and restaurants to have their own laundry for greater control of their costs, delivery times and finishing quality.

Why choose industrial laundry equipment for your hotel/restaurant?

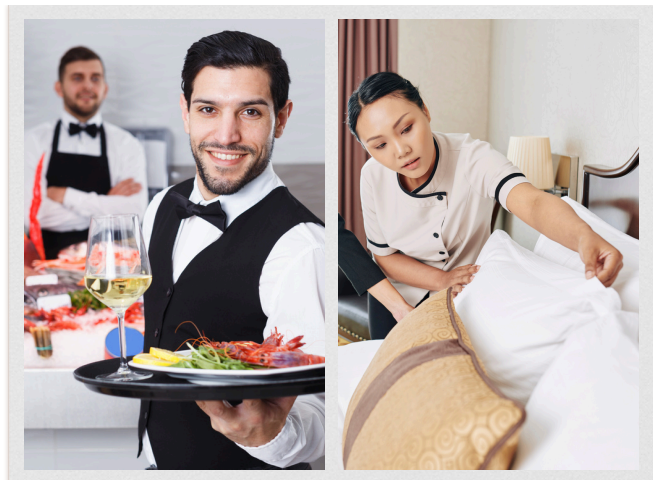
- To respect a determined level of hygiene.
- To maintain the cleanliness of bed linen, towels, tablecloths, etc.
- To use efficient machines and define an effective organization.
- To control quality and extend the life of textiles.



CREATING YOUR OWN INTEGRATED LAUNDRY

Creating an integrated laundry has many advantages in the hospitality sector :

- **Controlling the quality of washing and finishing** to meet the requirements of your customers in terms of linen cleanliness and hygiene.
- **Reducing and maintaining your costs** for more efficient management of your business.
- **Meeting the specific needs of your customers** by being flexible and fast, particularly in handling your customers' clothing.
- **Implementing and controlling all your processes** for your various textiles for greater security (theft, loss, error) and quality.
- **Reducing your environmental impact** thanks to equipment offering reduced energy, water and detergent consumption, by implementing good practices and reducing your carbon footprint (no external transport of laundry).



An integrated laundry also offers a significant competitive advantage for the brand image of your business:

- Customized services, based on the specific needs of your business : greater customer satisfaction
- Diversified services for your customers' personal laundry but also for surrounding businesses: additional income

A range adapted to your needs:

Danube offers a wide range adapted to your needs, whether you are a hotel, a restaurant or any other establishment welcoming customers.

Front washers



- **WED - high spin**

from 11 to 120 kg

With a high G factor, these washers offer an optimized washing cycle for reduced drying time, saving energy and saving time. The ET2 control, fully programmable, allows suitable programs for each type of washed textile with WET CLEANING programs, as standard, for delicate textiles. These models can be connected to AQUABAC water recovery tanks for greater savings. Many options are also available to adapt them to each need.

Dryers



- **DD - GOLD**
et **SILVER**

from 11 to 80 kg

The **GOLD** range is the most efficient, as standard, because it is fully equipped with all possible options to save energy.

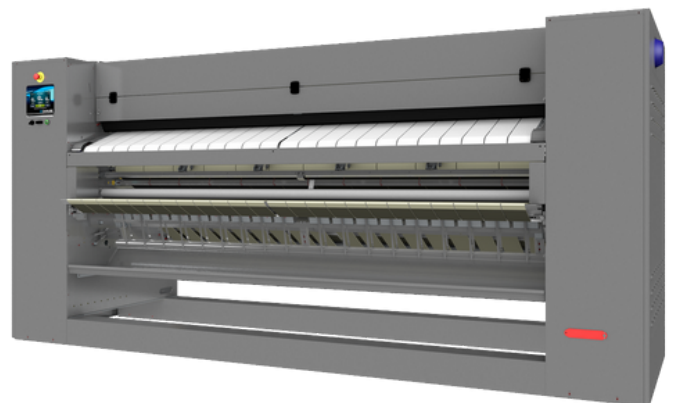
The **SILVER** range is the most versatile and equally efficient since it offers numerous options to adapt exactly to the required needs.

Both ranges are controlled by the fully programmable ET2 control.

Note, as an option, the perfume dosing / spraying system, perfect for fresh and soft laundry.

Flatwork ironers

Driven by ET2 control, this range of flatwork ironers offers a new design, for greater ergonomics and high-performance features. Numerous options are also available making them very flexible : built-in lengthwise folder, rear exit, radiant gas model, etc.



- **MII-ET2 / GII-ET2- ø 500 et 650 mm**

Also find out...

Aquabac

Water recovery tanks to save up to 70% water. This system does not require a lot of space. The tanks are self-cleaning with pre-determined programs via the ET2 control and easy to remove and clean.

Perfect for small capacity machines.



- **WREC-80**

80 or 150 litres 3 sizes

Centralized tanks for one or more machines, from 1 to 3 tanks of 1,000 liters. These models are particularly well suited for larger capacity machines (up to 8 machines of 35/45 kg).

Aquabac XL



And also...

Ozone cabinets

Designed to **deodorize** and **sanitize** all kind of clothing and accessories using ozone, DAN_O3 cabinets allow you to disinfect costumes and elaborate clothing that cannot be water washed, dried or ironed, in a natural way, without chemicals.



- **DAN_O3**

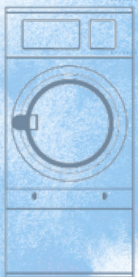
3 capacities: 313, 626 and 1252 litres

Finishing range

A wide choice of ironing tables, finishers and presses for finishing the garments of staff and customers.



My Notes





ONNERA GROUP

Onnera Laundry France

Parc d'activités de Sologne - CS10026 - 41600 Lamotte Beuvron Cedex - France

Tel : +33 (0)2 54 88 05 76

Support technique : +33 (0)2 54 88 83 22 - support@danube.fr

SAV pièces : +33 (0)2 54 88 83 65 - parts@onneragroup.com

info.olb@onneragroup.com