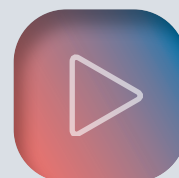


TUMBLE DRYERS



INTERACTIVE
CATALOGUE



WE THINK GREEN, WE THINK DANUBE

Our industrial dryers offer a wide range of capacities from 11 to 80 kg and several ranges to meet all the needs.

All the GOLD and SILVER ranges are equipped with the ET2 control with a 7" touch screen and offer DANUBE ONLINE communication as standard for an easy and free connection to IoT.

The most efficient range GOLD comes with all the options combining performance and high energy savings : CARE DRY to control humidity, AIR RECYCLE, OPTIMAL FLOW and insulated panels.

the SILVER range is very versatile and can be adapted to all kind of needs thanks to a lot of options available.

The BRONZE and BASIC ranges are equipped with the EM electronic control, easy to use.

Our new range of heat pump dryers also includes the best features from the GOLD range and achieve the best energy savings.

At last, new capacities have been added to our stack dryers with double drum.



RANGE OF MODELS

SINGLE POCKET

DD-GOLD ET2										
CONTROL TYPE	HEATING	CAPACITY								
		11-12 kg	14-15 kg	17-18 kg	22-24 kg	28-31 kg	33-37 kg	45-50 kg	60-67 kg	75-83 kg
EASY TOUCH 2 microprocessor	Electric, gas or steam	DD-11 ET2	DD-14 ET2	DD-18 ET2	DD-22 ET2	DD-28 ET2	DD-35 ET2	DD-45 ET2	DD-60 ET2	DD-80 ET2

DD-SILVER ET2										
CONTROL TYPE	HEATING	CAPACITY								
		11-12 kg	14-15 kg	17-18 kg	22-24 kg	28-31 kg	33-37 kg	45-50 kg	60-67 kg	75-83 kg
EASY TOUCH 2 microprocessor	Electric, gas or steam	DD-11 ET2	DD-14 ET2	DD-18 ET2	DD-22 ET2	DD-28 ET2	DD-35 ET2	DD-45 ET2	DD-60 ET2	DD-80 ET2

DD-BRONZE EM										
CONTROL TYPE	HEATING	CAPACITY								
		11-12 kg	14-15 kg	17-18 kg	22-24 kg	28-31 kg	33-37 kg	45-50 kg	60-67 kg	75-83 kg
EM Electronic control	Electric, gas or steam	DD-11 EM	DD-14 EM	DD-18 EM	DD-22 EM	DD-28 EM	DD-35 EM	DD-45 EM	DD-60 EM	DD-80 EM

DD-BASIC EM										
CONTROL TYPE	HEATING	CAPACITY								
		11-12 kg	14-15 kg	17-18 kg	22-24 kg	28-31 kg	33-37 kg			
EM Electronic control	Electric or gas	DD-11 EM	DD-14 EM	DD-18 EM	DD-22 EM	DD-28 EM	DD-35 EM			

DOUBLE POCKET

NEW

STD-SILVER ET2						
CONTROL TYPE	HEATING	CAPACITY				
		11-12 kg	14-15 kg	17-18 kg	22-24 kg (Gas only)	
EASY TOUCH 2 microprocessor	Electric or gas	STD-11 XP	STD-14 XP	STD-18 XP	STD-22 XP	

STD-BRONZE EM						
CONTROL TYPE	HEATING	CAPACITY				
		11-12 kg	14-15 kg	17-18 kg	22-24 kg (Gas only)	
EM electronic control	Electric or gas	STD-11 XP	STD-14 XP	STD-18 XP	STD-22 XP	

STD-BASIC EM						
CONTROL TYPE	HEATING	CAPACITY				
		11-12 kg	14-15 kg	17-18 kg	22-24 kg (Gas only)	
EM electronic control	Electric or gas	STD-11 XP	STD-14 XP	STD-18 XP	STD-22 XP	

NEW

SINGLE POCKET DD

GOLD



THE MOST EFFICIENT



- ✓ AIR RECYCLE: air recovery system.
- ✓ CARE DRY : intelligent humidity control.
- ✓ INSULATED PANELS: complete airflow circuit.
- ✓ OPTIMAL FLOW: optimized double airflow.
- ✓ DOUBLE DOOR GLASS.
- ✓ SPRINKLER: incorporated fire extinguishing system.
- ✓ ET2 control with 7" coloured touch screen.
- ✓ **DANUBE ONLINE communication - standard IoT connectivity.**
- ✓ Skinplate outer casing, stainless steel look.
- ✓ Big loading door (180° opening).
- ✓ REVERSING DRUM standard.
- ✓ STAINLESS STEEL DRUM standard.
- ✓ SOFT DRY: drum stamped holes.
- ✓ FILTER DRAWER: wide surface and improved airflow.
- ✓ COOL DOWN: anti-wrinkle.
- ✓ Electric, gas or steam heating.
- ✓ **OPTIONS**
Perfume dosing/spraying.

SILVER



- ✓ ET2 control with 7" coloured touch screen.
- ✓ **DANUBE ONLINE communication - standard IoT connectivity.**
- ✓ Skinplate outer casing, stainless steel look.
- ✓ Big loading door (180° opening).
- ✓ DOUBLE AIRFLOW: axial and radial.
- ✓ REVERSING DRUM standard.
- ✓ STAINLESS STEEL DRUM standard.
- ✓ SOFT DRY: drum stamped holes.
- ✓ FILTER DRAWER: wide surface and improved airflow.
- ✓ COOL DOWN: anti-wrinkle.
- ✓ Electric, gas or steam heating.
- ✓ **OPTIONS**
CARE DRY: intelligent humidity control.
SPRINKLER: fire extinguishing system
Double door glass.
Perfume dosing/spraying...

BRONZE



- ✓ EM electronic programmer: selection of time and temperature.
- ✓ Skinplate outer casing, stainless steel look.
- ✓ Big loading door (180° opening).
- ✓ DOUBLE AIRFLOW: axial and radial.
- ✓ REVERSING DRUM standard.
- ✓ STAINLESS STEEL DRUM standard.
- ✓ SOFT DRY: drum stamped holes.
- ✓ FILTER DRAWER: wide surface and improved airflow.
- ✓ COOL DOWN: anti-wrinkle.
- ✓ Electric, gas or steam heating.
- ✓ **OPTIONS**
Display for EM programmer.
Double door glass...

BASIC



- ✓ EM electronic programmer: selection of time and temperature.
- ✓ White lacquered outer casing.
- ✓ Big loading door (180° opening).
- ✓ DOUBLE AIRFLOW: axial and radial.
- ✓ REVERSING DRUM standard.
- ✓ Galvanized drum.
- ✓ SOFT DRY: drum stamped holes.
- ✓ COOL DOWN: anti-wrinkle.
- ✓ Electric or gas heating.
- ✓ **OPTIONS**
Display for EM programmer.

DOUBLE POCKET STD-XP NEW

SILVER



- ✓ ET2 control with 7" coloured touch screen.
- ✓ **DANUBE ONLINE communication - standard IoT connectivity.**
- ✓ Skinplate outer casing, stainless steel look.
- ✓ Big loading door (180° opening).
- ✓ DOUBLE AIRFLOW: axial and radial.
- ✓ REVERSING DRUM standard.
- ✓ STAINLESS STEEL DRUM standard.
- ✓ SOFT DRY: drum stamped holes.
- ✓ FILTER DRAWER: wide surface and improved airflow.
- ✓ COOL DOWN: anti-wrinkle.
- ✓ Electric or gas heating.
- ✓ **OPTIONS**
 - CARE DRY: intelligent humidity control.
 - SPRINKLER: fire extinguishing system.
 - Double door glass...

BRONZE



- ✓ EM electronic programmer: selection of time and temperature.
- ✓ Skinplate outer casing, stainless steel look.
- ✓ Big loading door (180° opening).
- ✓ DOUBLE AIRFLOW: axial and radial.
- ✓ REVERSING DRUM standard.
- ✓ STAINLESS STEEL DRUM standard.
- ✓ SOFT DRY: drum stamped holes.
- ✓ FILTER DRAWER: wide surface and improved airflow.
- ✓ COOL DOWN: anti-wrinkle.
- ✓ Electric or gas heating.
- ✓ **OPTIONS**
 - Display for EM programmer.
 - Double door glass...

BASIC



- ✓ EM electronic programmer: selection of time and temperature.
- ✓ White lacquered outer casing.
- ✓ Big loading door (180° opening).
- ✓ DOUBLE AIRFLOW: axial and radial.
- ✓ REVERSING DRUM standard.
- ✓ Galvanized drum.
- ✓ SOFT DRY: drum stamped holes.
- ✓ COOL DOWN: anti-wrinkle.
- ✓ Electric or gas heating.
- ✓ **OPTIONS**
 - Display for EM programmer.

THE HIGHEST ACHIEVING ONE ON THE MARKET

HIGH PERFORMANCE



EASY TOUCH 2

- User friendly and totally programmable. microprocessor with a 7" **touch screen**.
- **USB Connection**. Free software online for programming, telemetry, data analysis...
- **DANUBE ONLINE communication standard - free and easy connection to IoT**.
- **Videos shown on display**: ads, instructions. (useful for coin laundry).
- **Optional**:
Dosing/vaporizing system (softeners/perfumes).



FEATURES

- Stainless steel drum as standard (Except Basic).
- Reversing drum action as standard.
- Frequency inverter as standard.
- SOFT DRY as standard.
- DOUBLE AIRFLOW axial and radial as standard.



VERSATILITY

- **MAKE TO ORDER** : Possibility to customize the machines from factory with the available options.
- **WET CLEANING** : Possibility to create different phases per program with its customized parameters.
- **OPL ↔ COIN** : Standard OPL model easily transformable for Self Service laundry uses.
- **CARE DRY** intelligent humidity control (standard in GOLD).



EASY MAINTENANCE

- **Hinged panel**: Easy and ergonomic access to control panel parts.
- **Easy access to parts for reparability**: Dryers are designed to offer an easier maintenance and repair (Example: rear panel in big capacity dryer).
- **Technical menu**: Machine monitoring, machine error warning, management for telemetry and statistics. Remote desk and data recovery for technicians and maintenance, software update, etc.



ERGONOMICS

- **Drawer as fluff filter, made of stainless steel (except Basic).**
- **Big door diameters** Helpful for loading and unloading.
- **Ideal door height for ergonomic opening.**
- **Opening sense of door adjustable on site** (models 11 to 35 kg).
Opening sense can be changed just turning the front panel and adding a part (longer wire to be ordered).
- **Reversible door can be ordered for all dryers, factory fitted.**
- **Sliding door for models from 45 to 80 kg as new option.**



CONNECTIVITY

- **DANUBE ONLINE - IoT connectivity standard:**
Machine monitoring, error warning, remote desk and data recovery for technicians and maintenance, software updates...
- **Management of OPL or coin-operated laundries:**
Danube IoT solution allows you to manage your laundry business (create discount programs, get statistics, telemetry, laundry monitoring...).
- **LEMS by Onnera - pulse concentrator:** Collects accurate data on water, gas and electric consumption to provide an overview of your laundry.
- **Remote payment:** App for payment, cashless payment by scanning a QR code, promotions and machine booking.



EFFICIENCY

- **CARE DRY** intelligent humidity control with new drum inlet temperature control.
- **AIR RE-CYCLE.** Efficient air recirculation system. Short drying times, less energy consumption.
- **OPTIMAL FLOW.** New "optimized" system of mixed airflow (Gold version).
- **DOUBLE FLOW.** Axial radial airflow.
- **Big fluff filter.**
- **Thermal insulation.**





EASY TOUCH 2

Touch Screen 7"

Coloured touch screen:
Wide 7" screen on all the models with ET2.
Fully programmable: 20 preset programs and possibility to create infinite more.

Dosing/ vaporizing system

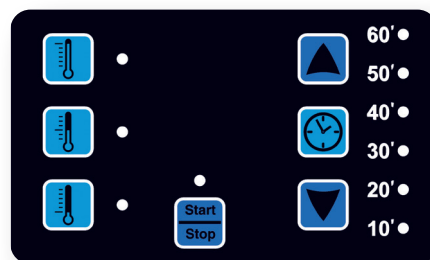


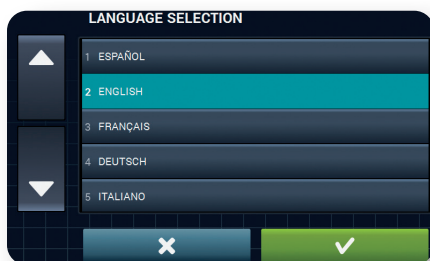
IoT - DANUBE ONLINE

Offers feedback from the machines to the device through the cloud, about telemetry and statistics to be analyzed and to ensure **maximum hygiene**.

EM Electronic control (BRONZE and BASIC ranges)

Push buttons to control temperature and time.
Simple and user friendly.
Programmable with external console (optional).
Display as option.





37 available languages

Easy to configure, making it accessible to as many people as possible.

Videos shown on display

Very useful for self-service : ads, instructions, etc.



USB connection

To import and export data or programs, configure and update machines, without an Internet connection.



DANUBE
online





EFFICIENCY

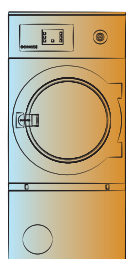
The GOLD range dryers and the heat pump range offer as standard a wide variety of efficient features to achieve significant energy savings.



THE MOST EFFICIENT RANGES

Insulated panels and double door glass

Insulated panels to avoid loss of heat.



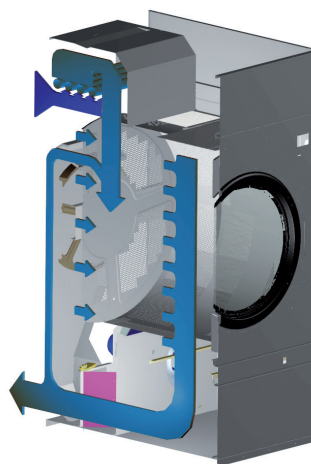
THERMAL INSULATION



NO THERMAL INSULATION

Air recirculation system

Efficient air recovery system.
Short drying times, less energy consumption.



Care Dry



Intelligent humidity control (standard on GOLD, optional on SILVER).

Temperature probe at drum inlet

A more accurate temperature control in the drum.

Double Flow

Axial-radial airflow.

Optimal Flow

Optimized mixed airflow system on GOLD range.



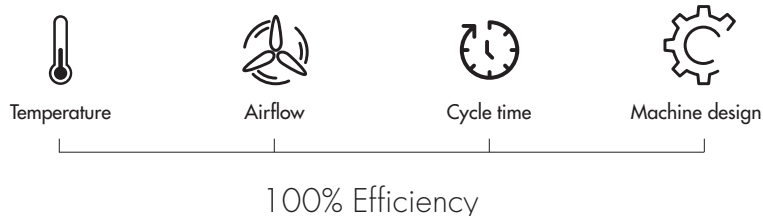
Optimized cycle time

Full load of cotton clothes with 45 % of residual moisture.

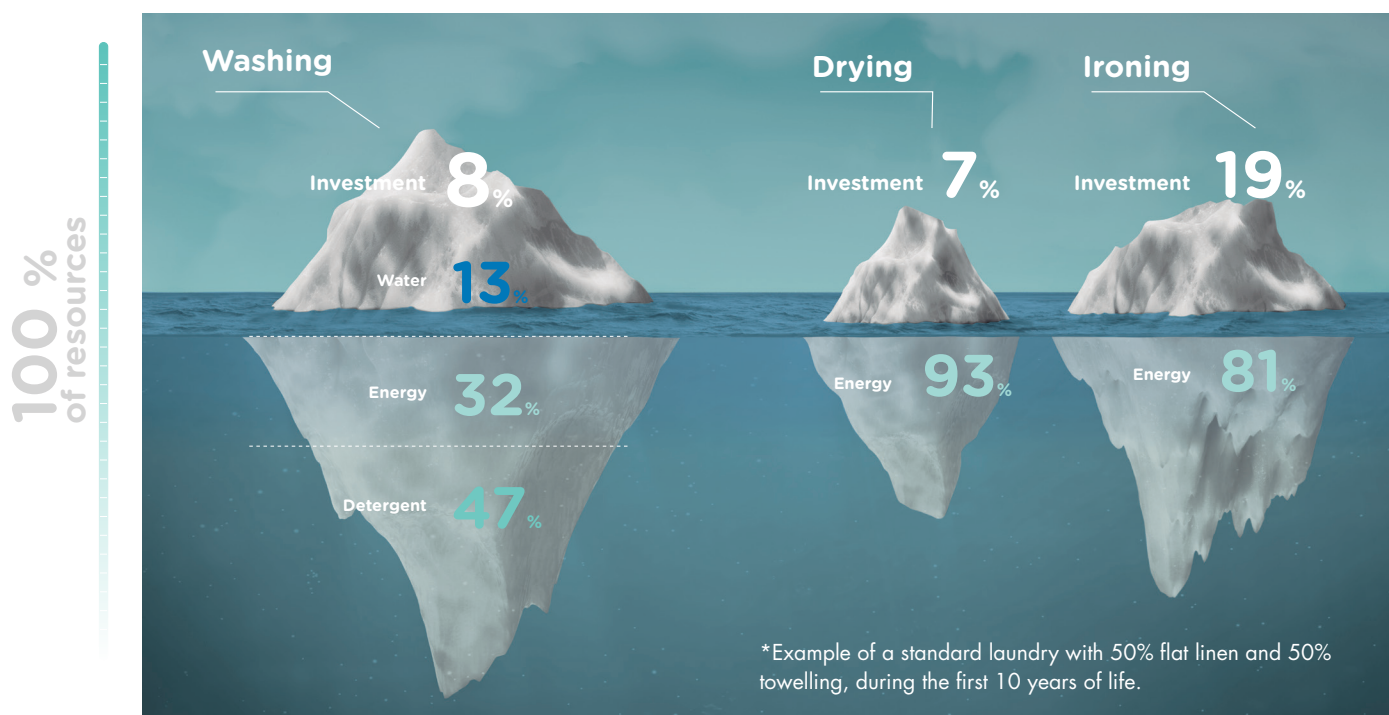


For laundries where process quality and energy savings are a priority, DANUBE dryers offer high-performance features as standard to meet the most demanding requirements.

Their design also has a significant impact on energy efficiency, reducing running costs without compromising quality and productivity.



In a laundry, machinery is the tip of an iceberg. Danube pays a specific attention to the invisible part, to optimize resources throughout the life cycle of machines.



Water

Our machines incorporate water recovery technology and management to guarantee low consumption and optimum use of water in each wash cycle.



Energy

Optimizing energy is a key point in the management of a laundry to ensure greater savings and greater efficiency.



Chemicals

Adapting the quantity of detergents to suit the load and the laundry means extra savings, better care for your clothes and greater respect for the environment.



Time

By adjusting process times appropriately, the efficiency and profitability of the laundry is increased.

VERSATILITY

Tumble dryers between 11 and 35 kg are specially designed for coin sector.

Make to order: customization

Possibility to customize a dryer from factory with various available options.



Wet Cleaning[®]

Our dryers have all the features to use the wet cleaning system.

- ✓ Fully programmable control: possibility to program by phases.
- ✓ Accurate control of in and out temperatures.
- ✓ Precise humidity programming.
- ✓ Adjustable drum speed.

Care Dry

Intelligent humidity control which automatically adapts the rotative speed of the drum to the level of moisture detected in each phase of drying (standard on GOLD, optional on SILVER).



PAYMENT SYSTEMS

Danube offer different payment options that can be combined to suit all types of self-service laundry and meet the needs of many businesses.

OPL < > Coin

Easy transformation from an OPL to a COIN machine.
Three available options:



DANUBE LAUNDRY KIOSK

Optimize your laundry business with an all-new central pay providing versatile, efficient and secure user experience for both customers and owners.

- ✓ Available in 12" and 32" touchscreen
- ✓ Enable contactless payment by card or smart device (NFC)
- ✓ Full remote control for managing prices, promotions, etc.
- ✓ Customisable



DANUBE LAUNDRY KIOSK 32"



DANUBE LAUNDRY KIOSK 12"



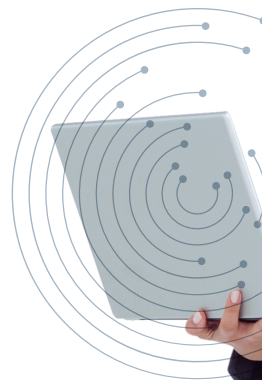
DANUBE LAUNDRY payment APP

Select your laundromat, book your machine and pay remotely.



Coins/Tokens

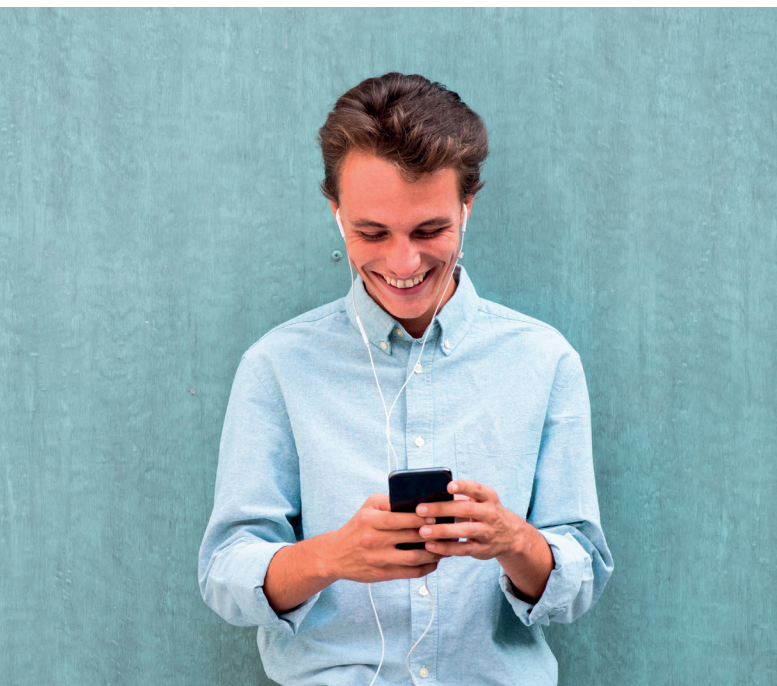
Washers and dryers can be fitted with token or coin kits in various currencies.





CONNECTIVITY

A LOT OF ADVANTAGES :



The DANUBE ONLINE solution brings added value to machines, with a host of advantages and a high level of comfort for a wide variety of users:



Owners

- ✓ Manage your business remotely, optimize your processes via a user-friendly interface and obtain detailed reports.
- ✓ Control machines, schedules and self-service payment systems.



Dealers

- ✓ Manage your fleet of machines: new customers, leasing, maintenance contracts, laundromats, etc.
- ✓ Access a detailed database of installed machines, geographical distribution, models, etc.



Chemical partners

- ✓ Create and manage wash programs online to guarantee cycle efficiency and quality.
- ✓ Optimize detergent use in real time and connect dosing system via RS-485.



Customers

- ✓ Locate and book your machine remotely in your favorite shop.
- ✓ Make fast, secure payments.
- ✓ Check the status of your laundry in real time.
- ✓ Take advantage of promotions.



Technical service

- ✓ Improve service with faster support.
- ✓ Diagnose incidents remotely.
- ✓ Access accurate data and keep machines up to date without having to travel.





THE INTERNET OF THINGS

STANDARD ON ALL RANGES WITH ET2 CONTROL Free and easy connection to IoT

The Internet of Things (IoT) is the digital interconnection of everyday objects with internet.

With this in mind, DANUBE machines, equipped with EASY TOUCH 2 control, have been designed to use this technology and obtain a wide range of information to control and optimize all processes.

All the machines are ready for Ethernet connection.



DANUBE ONLINE Standard

This is Danube's free standard IoT platform, essential for improving efficiency and managing your laundry remotely.

The DANUBE ONLINE platform centralizes all your laundry data using IoT, enabling you to manage, control and optimize your machines and resources in real time, from anywhere, with a computer, a tablet or smartphone.

- **Immediate access to your information**
Make rapid decisions to reduce operating costs and maximise operational efficiency.
- **Integrity and confidentiality of your data**
Advanced safety guaranteed.
- **Available in several languages**
To suit your needs.
- **Regular updates with new features**
Free of charge to keep your business at the cutting edge of innovation





ERGONOMICS

Designed to be as comfortable as possible for the user.



Opening sense of door adjustable on site

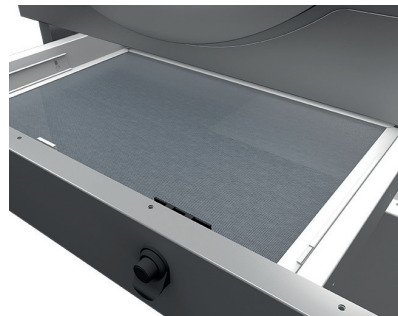
Opening sense can be easily changed in models 11 to 35 kg.
It can also be ordered from factory.

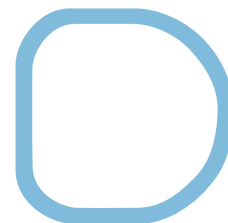
Biggest door diameters

Helpful for loading and unloading.

Big fluff filter

Drawer with stainless steel grid, easy to open and clean.





NEW

Front tilting system

on 45 to 80 kg models.



NEW

Sliding door for a better loading and unloading

Automatic or manual operation option
on dryers from 45 to 80 kg.



FEATURES

All dryer ranges are equipped with essential features as standard.

Stainless steel drum

As standard (Galvanized steel on BASIC only).

Reversing drum action

As standard.

Frequency inverter

As standard.

Soft dry

drum perforations with stamped holes.





EASY MAINTENANCE

Offering quality equipment and parts of reputed brands, which demand little maintenance.

Easy access to parts

Dryers are designed to offer an easy maintenance and reparability.

Same parts

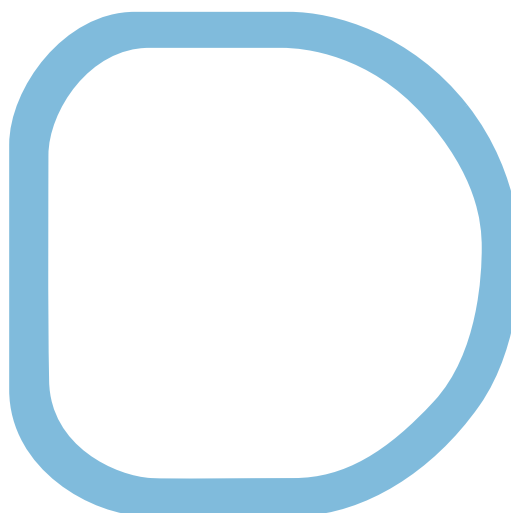
Many key parts are the same for all models (inverter, contactors, electronic elements, gear).

Technical menu

Machine monitoring, statistics, telemetry, autotest, data recovery for technicians and maintenance.

Hinged panel

Easy and ergonomic access to control panel parts.



INTELLIGENT LAUNDRY

by Danube

DANUBE introduces the laundry of the future with high-performance and connected machines, offering cutting-edge technology to manage and monitor the different resources used in real time.

Efficient machines

With DANUBE dryers featuring highly efficient functions such as CARE DRY, OPTIMAL FLOW or AIR RECYCLE to save energy and drying time.



LEMS by Onnera - Pulse concentrator

With the new LEMS together with DANUBE ONLINE platform, all your laundry data is collected to analyse the efficiency of your machines.

DANUBE ONLINE - IoT platform

The free DANUBE ONLINE platform integrates all the data collected by LEMS allowing you to control and improve your laundry processes for better hygiene and reduced operating costs.

AQUABAC XL

New centralized tank for one or more machines, from 1 to 3 tanks of 1.000 liters.

Industrial washers

WED-45C to WED-120C ET2.



TUMBLE DRYERS TECHNICAL DATA

	UNIT.	DD-11	DD-14	DD-18	DD-22	DD-28	DD-35	DD-45	DD-60	DD-80
MODEL										
Capacity 1/18	Kg	11,7	15	18,3	24,3	30,6	36,7	50	66,7	83,3
Capacity 1/20	Kg	10,5	13,5	16,5	22	27,5	33	45	60	75
Hourly Output GOLD (Elec/gas)	Kg/h	21,7 / 31,3	29 / 32,5	30 / 33,6	40 / 44,6	51,6 / 61,1	63,9 / 73,3	90 / 96,40	128,6 / 144	136,4 / 187,5
Hourly Output SILVER-BRONZE-BASIC (Elec/gas)	Kg/h	20,3 / 28,6	26,9 / 30,3	28,3 / 31,9	34 / 40	48,4 / 59,3	60 / 63,9	80,4 / 84,4	120 / 128,6	128,6 / 173,1
Evaporation capacity GOLD (Elec/gas)	l/h	11 / 14,95	14,5 / 15,6	14,9 / 16,3	20 / 22,3	26,8 / 31,8	31,5 / 34,7	45 / 48,20	64 / 72	68,2 / 93,8
Evaporation capacity SILVER-BRONZE-BASIC (Elec/gas)	l/h	9,3 / 14,5	13,5 / 15,4	14,1 / 16,3	17 / 20	26,1 / 30,9	31,1 / 32,1	40,2 / 42,5	60,2 / 65,8	64 / 86,5
DRUM										
Ø Drum	mm	750	750	750	835	947	947	1225	1225	1225
Ø Door	mm	574	574	574	574	802	802	802	802	802
Door center height	mm	976	976	976	1030	1040	1040	1275	1275	1275
Load hole bottom height	mm	689	689	689	743	640	640	874	874	874
Drum length	mm	475	610	746	800	780	936	760	1020	1252
Drum volume	l	210	270	330	440	550	660	900	1200	1500
POWER										
Drum motor power	KW	0,37	0,37	0,37	0,37	0,55	0,55	0,75	1,1	1,5
Fan Motor Power GOLD	KW	0,55	0,55	0,55	0,75	0,75	0,75	2,2	2,2	2,2
Fan Motor Power SILVER-BRONZE-BASIC	KW	0,25	0,25	0,25	0,55	0,55	0,55	1,1	1,1	1,1
Electric heating power ALL RANGES	KW	12	18	18	24	30	36	54	72	72
Total elec. power (elec. mod.) GOLD	KW	12,97	18,97	18,97	25,17	31,35	37,35	57	75,35	75,75
Total elec. power (elec. mod.) SILVER-BRONZE-BASIC	KW	12,67	18,67	18,67	24,97	31,15	37,15	55,9	74,25	74,65
Gas heating power ALL RANGES	KW	20,51	20,51	20,51	31	41	41	60	90	120
Total elec. power (gas mod.) GOLD	KW	0,97	0,97	0,97	1,17	1,35	1,35	3	3,35	3,75
Total elec. power (gas mod.) SILVER-BRONZE-BASIC	KW	0,67	0,67	0,67	0,97	1,15	1,15	1,9	2,25	2,65
Steam heating power ALL RANGES	KW	30	30	30	49,2	50,1	50,1	91,3	128	128
Total elec. power (steam mod.) GOLD	KW	0,97	0,97	0,97	1,17	1,35	1,35	3	3,35	3,75
Total elec. power (steam mod.) SILVER-BRONZE-BASIC	KW	0,67	0,67	0,67	0,97	1,15	1,15	1,9	2,25	2,65
DIMENSIONS										
Net dimensions (W x D x H)	mm	785x855x1694	785x989x1694	785x1125x1694	890x1255x1812	985x1054x1975	985x1210x1975	1270x1106x2380	1270x1366x2380	1270x1598x2380
Gross dimensions (W x D x H)	mm	865x940x1840	865x1074x1840	865x1210x1840	970x1345x1940	1065x1154x2080	1065x1310x2080	1330x1185x2150	1330x1455x2150	1330x1705x2150
Net Weight	Kg	172	180	187	210	230	260	395	529	657
Gross Weight	Kg	180	190	200	230	260	285	430	575	715
OTHERS										
Max airflow GOLD	m³/h	1200	1200	1200	1500	1500	1500	4500	4500	4500
Max air flow SILVER-BRONZE-BASIC	m³/h	850	850	850	1200	1200	1200	3000	3000	3000
Ø fume exhaust	mm	200	200	200	200	200	200	300	300	300
Noise level	dB	64	64	64	65	65	65	67	67	67

	GOLD-EASY TOUCH 2	SILVER - EASY TOUCH 2	BRONZE - EM	BASIC - EM
Easy Touch 2	X	X	-	-
IoT – DANUBE ONLINE	X	X	-	-
EM Electronic programmer	-	-	X	X
Autoreverse drum	X	X	X	X
Inverter	X	X	X	X
Outer casing in grey skinplate	X	X	X	-
White coated external panels	-	-	-	X
Stainless Steel drum	X	X	X	-
Galvanized drum	-	-	-	X
SOFT DRY	X	X	X	X
DOUBLE FLOW (Axial+Radial)	-	X	X	X
OPTIMAL FLOW (Optimized axial+radial Flow)	X	-	-	-
CARE DRY intelligent moisture control + temperature sensor	X	OPT.	-	-
AIR RECYCLE (Air recycling system)	X	-	-	-
THERMAL INSULATION - Insulated panels	X	-	-	-
Double door glass	X	OPT.	OPT.	-
SPRINKLER	X	OPT.	-	-
Dosing/Vaporising system (softeners/perfumes)	OPT.	OPT.	-	-
Drum Inlet Temperature control	X	OPT. with CARE DRY	-	-

	UNIT.	STD-11 XP	STD-14 XP	STD-18 XP	STD-22 XP
MODEL					
Capacity 1/18	Kg	11,7 x 2	15 x 2	18,3 x 2	24,3 x 2
Capacity 1/20	Kg	10,5 x 2	13,5 x 2	16,5 x 2	21,9 x 2
Hourly output (elec./gas)	Kg/h	54 / 61,6	58 / 62,8	62 / 64	- / 88
Evaporation capacity (elec./gas)	l/h	27 / 30,8	29 / 31,4	31 / 32	- / 44
DRUM					
Ø Drum	mm	750	750	750	835
Ø Door	mm	574	574	574	574
Door center height	mm	547 / 1522	547 / 1522	547 / 1522	574/1618
Load hole bottom height	mm	260 / 1235	260 / 1235	260 / 1235	286/1330
Drum length	mm	475	610	746	800
Drum volume	l	210	270	330	440
POWER					
Drum motor power	KW	0,37 x 2	0,37 x 2	0,37 x 2	0,37 x 2
Fan Motor Power	KW	0,25 x 2	0,25 x 2	0,25 x 2	0,55 x 2
Heating installed power (elec. mod.)	KW	12 x 2	18 x 2	18 x 2	-
Electric installed power	KW	25,34	37,34	37,34	-
Heat. installed power (gas mod.)	KW	20,5 x 2	20,5 x 2	20,5 x 2	30,4 x 2
Electric installed power (gas mod.)	KW	1,34	1,34	1,34	1,94
DIMENSIONS					
Net dimensions (W x D x H)	mm	785x1001x1994	785x1135x1994	785x1271x1994	870x1312x2118
Gross dimensions (W x D x H)	mm	865x1084x2126	865x1218x2126	865x1354x2126	950x1395x2250
Net Weight	Kg	284	299	329	374
Gross Weight	Kg	295	312	329	389
OTHERS					
Nominal airflow	m³/h	500 x 2	500 x 2	500 x 2	900 x 2
Ø fume exhaust	mm	200	200	200	250
Noise level	dB	64	64	64	69

	SILVER-EASY TOUCH 2	BRONZE – EM	BASIC – EM
	STACK	STACK	STACK
Easy Touch 2	X	-	-
IoT – DANUBE ONLINE	X	-	-
EM Electronic programmer	-	X	X
Autoreverse drum	X	X	X
Inverter	X	X	X
Outer casing in grey skinplate	X	X	-
White coated external panels	-	-	X
Stainless Steel drum	X	X	-
Galvanized drum	-	-	X
SOFT DRY	X	X	X
DOUBLE FLOW (Axial+Radial)	X	X	X
FULL FLOW (Optimized axial+radial Flow)	-	-	-
CARE DRY intelligent moisture control + temperature sensor	OPT.	-	-
AIR RECYCLE (Air recycling system)	-	-	-
THERMAL INSULATION - Insulated panels	-	-	-
Double door glass	OPT.	OPT.	-
SPRINKLER	OPT.	-	-
Dosing/Vaporising system (softeners/perfumes)	OPT.	-	-
Drum Inlet Temperature control	OPT. with CARE DRY	-	-

TUMBLE DRYERS

www.danube-international.com



ONNERA LAUNDRY FRANCE SAS
3 rue Léonard da Vinci
Parc d'Activités de Sologne - CS 10026
41600 Lamotte-Beuvron - FRANCE
Tél.: +33 (0)2 54 88 05 76
Fax: +33 (0)2 54 96 89 04
Hotline: +33 (0)2 54 88 83 22
support@danube.fr
SAV: +33 (0)2 54 88 83 65
Logistique commandes:
+33 (0)2 54 88 05 76
info.olf@onneragroup.com

MORE INFO:



ONNERA GROUP