

AQUABAC XL & AQUABAC



AQUABAC XL & AQUABAC

Save water, energy and chemicals!



Water has become an essential and precious resource that must be preserved and saved. In fact, industrial laundry is now fully part of this sustainable development approach.

The AQUABAC XL and AQUABAC water recovery tanks are the ideal solution for optimizing your laundry's water consumption with ease.

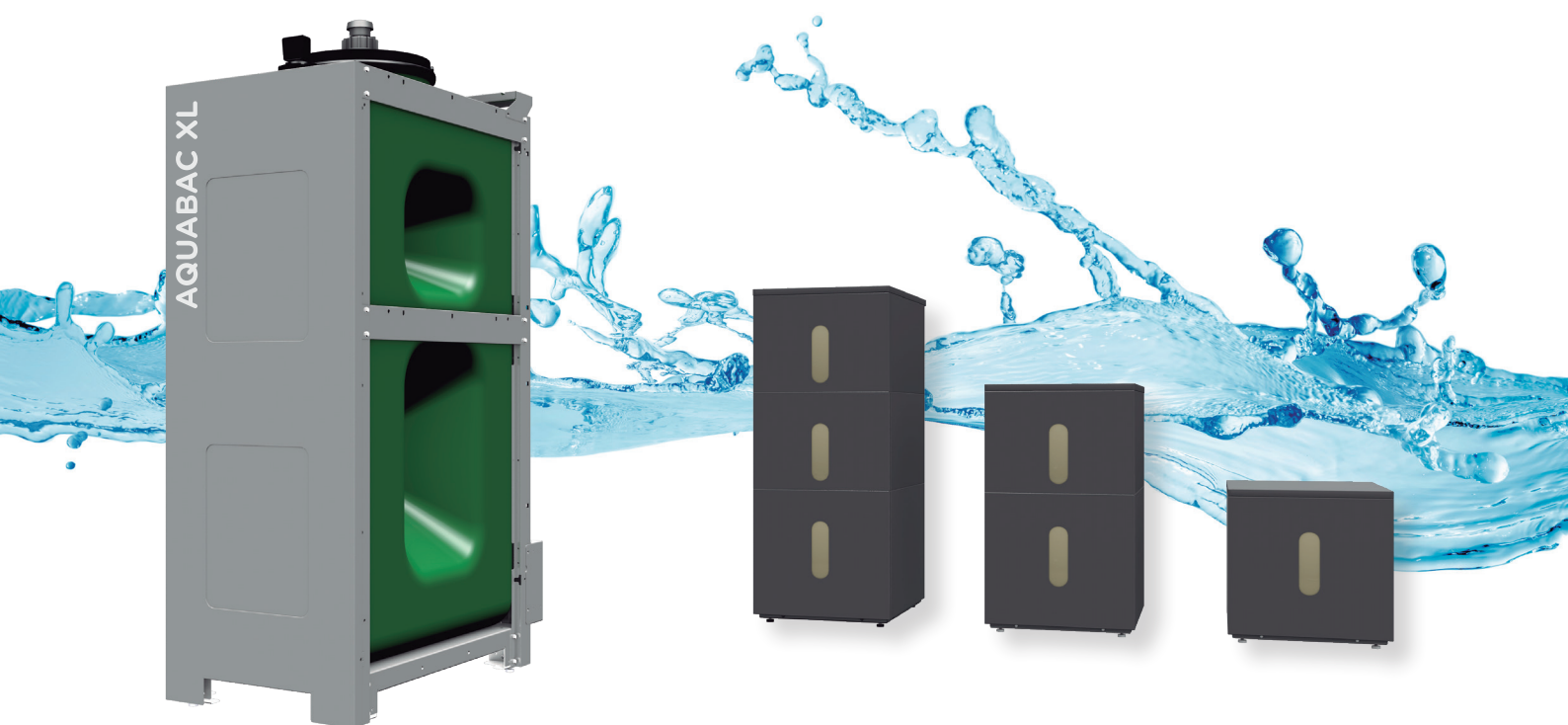
These models are available with small and large capacity tanks, and allow the recovery of up to 70% of the water used in each wash cycle, thus reducing costs and the production of waste in the environment.

The AQUABAC XL and AQUABAC models perfectly meet today's ecological concerns and anticipate those of tomorrow.

Savings 40 to 70% ***
of water, chemicals
and energy

2 level sensors
in each tank

Made of
high-density
polyethylene and
external
reinforcement



AQUABAC XL

For large laundries and high capacity machines.

- ✓ Capacity of 1000 litres of water per tank.
- ✓ Structure with trim panel.
- ✓ Pumps and filters.
- ✓ Combinable with other AQUABAC XL and with various machines.*

AQUABAC

For laundries with limited space and smaller capacity machines

- ✓ Capacity of 80 to 150 litres of water per tank, up to 3 tanks arranged in a column.
- ✓ Structure with feet.
- ✓ One AQUABAC with 1, 2 or 3 tanks per machine.**

*see conditions and uses page 6 / **see conditions and uses page 14.

*** Percentages depending on the type of programs, garments and processes.

AQUABAC XL



OUTSTANDING FEATURES



Combinable

Different AQUABAC XL can be combined with different DANUBE machines with EASY TOUCH 2.

- ✓ 1, 2 or 3 AQUABAC XL tanks can be combined.
- ✓ 1 or more machines can be connected to the AQUABAC XL:
 - up to 8 machines of 35/45 kg.
 - up to 4 machines of 60/80 kg.
 - up to 3 machines of 100/120 kg.

Durable

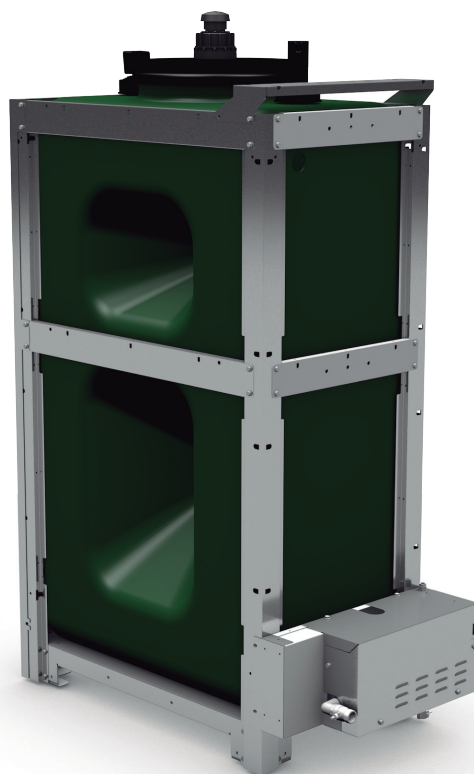
Made of high density polyethylene and external reinforcement with galvanized steel structure.

- ✓ Interior with rounded corners to prevent dirt accumulation and facilitate cleaning.
- ✓ With holes to be fixed to the ground.
- ✓ Customizable.

Large capacity tanks

Designed to store up to 1000 litres, allowing to save large volume of water.

- ✓ Can be installed next to machines or high above them (see page 7).



Perfect for industrial laundries
with large capacity machines



EFFICIENCY



Save 40 to 70% water*

by reusing water in the different phases of washing and rinsing clothes.



Save on detergents

by optimising the use of water in the various washing phases. AQUABAC XL reduces the need for chemicals to treat the water, taking advantage of the purity of the water in each cycle.

* Percentages depending on the type of programs, garments and processes



Save up to 40% energy*

by reducing the signals from dosing pumps and conventional pressure systems, which require large amounts of energy.



Save time

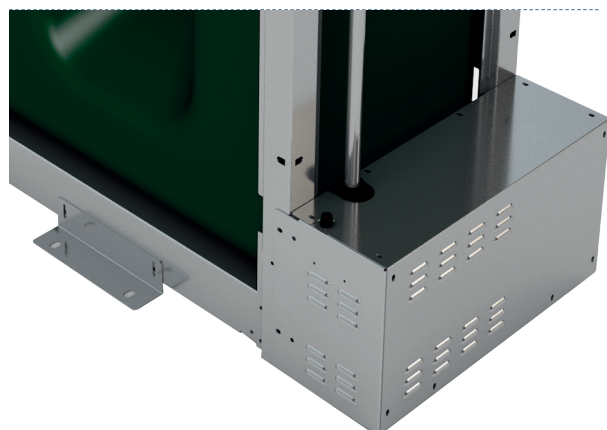
by accurately adjusting the duration of washing processes to achieve efficiency and profitability.



INSTALLATION

Fixing

Holes are integrated to facilitate anchoring to the ground.



Accessory kit available

For easy connection of washing machines and barriers to tanks (option).

2 water level sensors

in each tank, which indicate the minimum and maximum level of water.

What is needed?

1

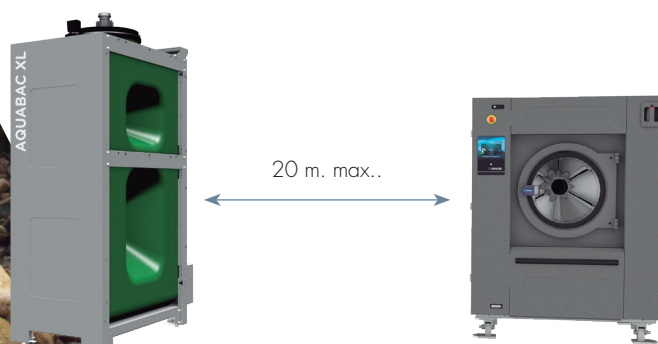
Have one or more DANUBE front or barrier washers controlled by EASY TOUCH 2 and with compatible capacities.

- ✓ **ET2 industrial washers** with capacity 35, 45, 60, 80, 100, 120 kg.
- ✓ **ET2 barrier washers** with capacity 27, 35, 50, 70, 100 kg.



AQUABAC XL KEY POINTS

For a modern, productive and durable laundry, suitable for high-capacity machines.



Side installation:

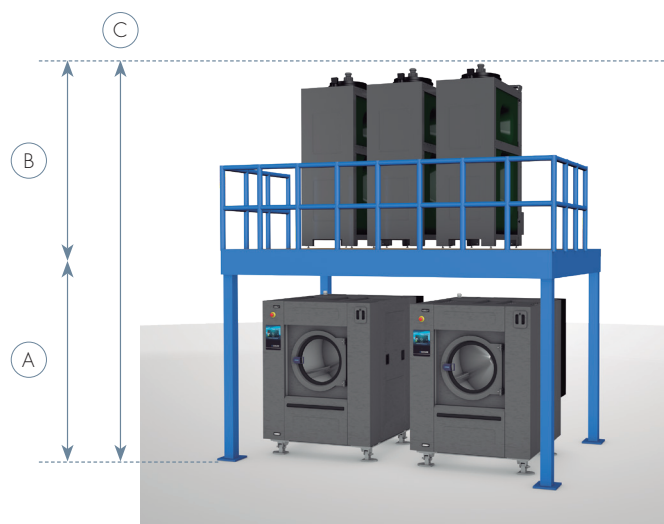
Maximum lateral distance between washing machines and tanks: 20 meters.

2

Take into account the space required to place the tanks next to or above the washers/barriers in order to comply with the operating parameters.

Height installation:

- (A) Height of the base: minimum 2.5 m and maximum 3 m.
- (B) Height of the tanks: 2 meters.
- (C) Maximum height of the base + tanks: 5 meters.



3

Have water and electricity connections. Fittings are not supplied with the tank.*

* A "Ready for tank" kit can be ordered at the same time as the washers.



1" solenoid valves from tanks to washing machines and from pumps to tanks.

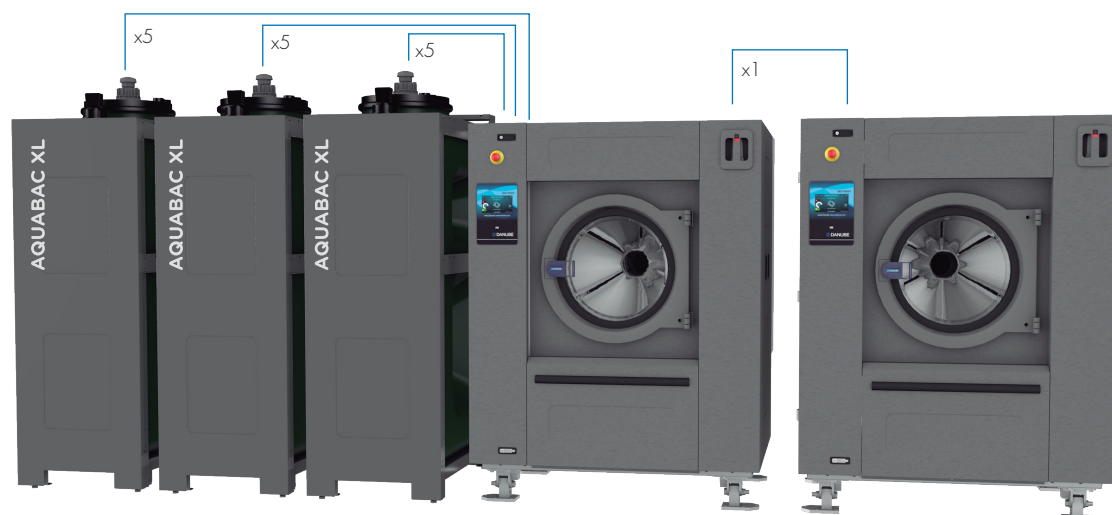
4

Connecting machines and tanks.

The "hose and accessories kit" is available as an option for connecting 1 washer/barrier to 3 tanks.

Each kit includes:

- ✓ 25 meters flexible.
- ✓ 25 meters electrical hose.
- ✓ 6 pcs T connection.
- ✓ 12 clamps.



Example of side installation, with electrical connection cables for 2 washers and 3 tanks.

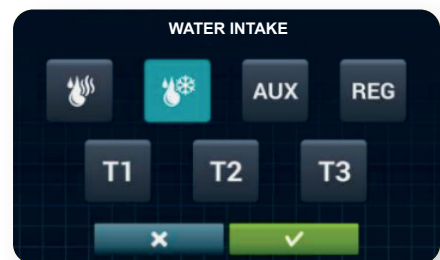
How is it controlled?

From the EASY TOUCH 2 control of the front or barrier washer, you can easily activate the tanks, configure filling and draining, create your own programs and optimize the washing process according to your needs.

Choose the water source

You can decide which water inlets to fill the drum of the washer or barrier.

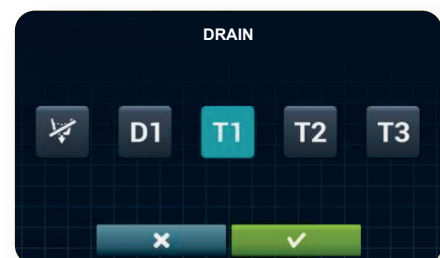
- ✓ Hot water inlet.
- ✓ Cold water inlet.
- ✓ Hot and cold water inlet for faster filling with or without temperature control.
- ✓ T1 / T2 / T3: the washer/barrier selects tank 1, 2 or 3 for the water inlet.



Choose the water destination

You can choose whether the destination of the water in the drum will be the main drain or an installed tank.

- ✓ **D1: Drain via the main valve.** This valve discharges the water to the drainage system. The water will not be recovered.
- ✓ **T1 / T2 / T3: drain into the tank.** If tanks are installed, you can choose to send the water from the drum to one of these tanks. Simply select the tank in which the water will be stored.



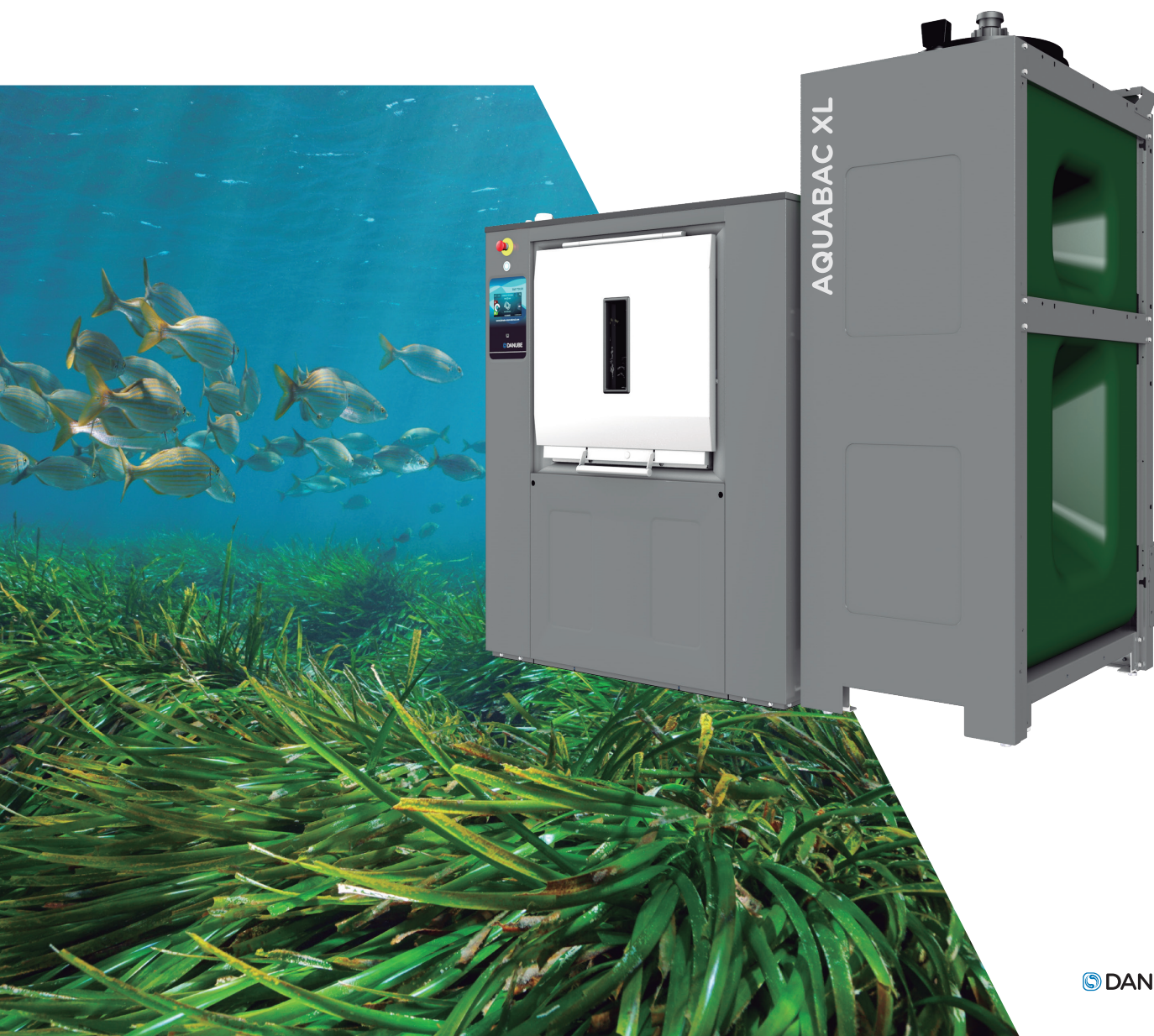
How to maintain it?

Making tank maintenance easier is essential for maintaining impeccable hygiene.

Cleaning filters and tanks

to keep equipment in perfect condition.

- ✓ Cleaning the tank pump filter.
- ✓ Cleaning the washing machine pump filter.
- ✓ Cleaning the AQUABAC XL tank. This should be done with pressurized water from the top of the tank.
- ✓ Monitoring water quality.
- ✓ Performing a chemical check.

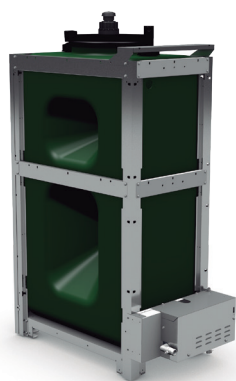


INTELLIGENT LAUNDRY

by Danube

Introducing the Laundry of the Future

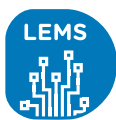
Thanks to the high-performance and connected Danube machines, offering cutting-edge technology, the consumption of different resources can be managed and monitored in real time. This technology is perfect for any business in any sector.



Add AQUABAC XL

Integrating AQUABAC XL into your INTELLIGENT LAUNDRY makes it much more efficient and sustainable, increasing the profitability of your business.





LEMS - Total control of consumption

With the new LEMS pulse concentrator and DANUBE ONLINE (IoT), you can retrieve all the data and analyse the efficiency of your washing machines and the AQUABAC XL, such as the consumption of water, energy and other resources required by your industrial laundry.



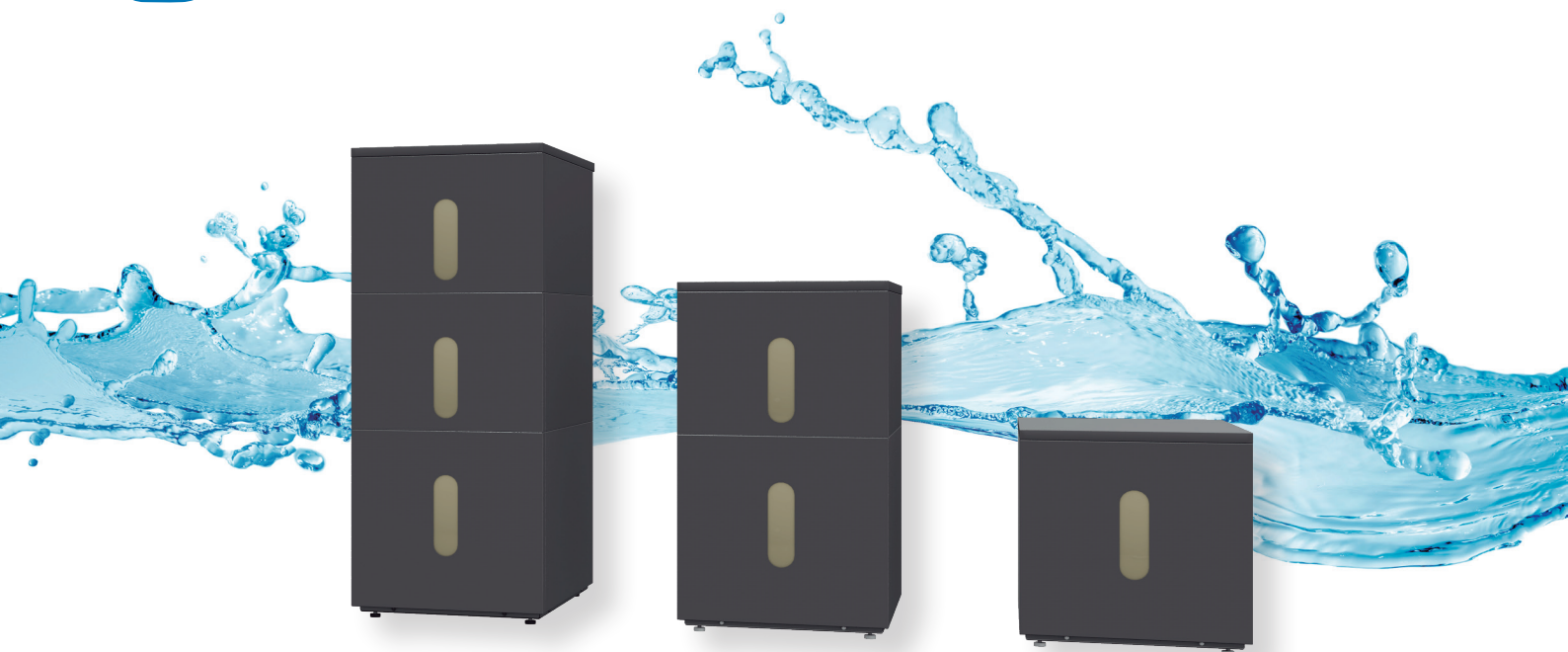
DANUBE ONLINE - Free IoT platform

The data collected by LEMS, together with other metrics and values from your laundry, are integrated into the DANUBE ONLINE platform, allowing you to monitor and control your business live and get detailed reports on management, hygiene and efficiency.





OUTSTANDING FEATURES



80 and 150 litre tanks

to save a lot of water in small spaces.

In column

Each washer or barrier can have 1, 2 or 3 tanks in a column.

Wet Cleaning[®]

Prepared for Wet Cleaning

Possibility to use the tanks to premix water and chemical products, avoiding direct contact of delicate garments with detergents.



Durable

Made of high density polyethylene and external reinforcement with skinplate panel structure, stainless steel aesthetics.

- ✓ Interior with rounded corners to prevent dirt accumulation and facilitate cleaning.

Little space

Thanks to its compact, column-shaped dimensions, it fits perfectly into small spaces and is ideal for reusing water from small-capacity machines.



EFFICIENCY



Save water

by reusing water in different phases of washing and rinsing clothes



Save energy

by reducing the signals from dosing pumps and conventional pressure systems, which require large amounts of energy.



Save on detergents

by optimising the use of water in the various washing phases. AQUABAC reduces the need for chemicals to treat the water, taking advantage of the purity of the water in each cycle.



Save time

by accurately adjusting the duration of washing processes to achieve efficiency and profitability.



EASY MAINTENANCE AND INSTALLATION

Plug and Play

Easy to connect and install on washers with EASY TOUCH 2 control.

2 water level sensors

in each tank, which indicate the minimum and maximum level of water.

Self-cleaning

Thanks to the predefined programs of the EASY TOUCH 2 control.

Removable tanks

for easy cleaning and maintenance.

What is needed?

1

Have one or more DANUBE front or barrier washers controlled by EASY TOUCH 2 and with compatible capacities.

80 litre tanks

✓ ET2 front washers from 11 to 18 kg.

✓ ET2 barrier washers: 16 kg.

150 litre tanks

✓ ET2 front washers from 22 to 28 kg.

✓ ET2 barrier washer: 22 kg.

2

Take into account the location to place the tanks to comply with the operating parameters.

3

Have water and electricity connections.

Fittings are not supplied with the tank. *

* A "Ready for tank" kit can be ordered at the same time as the washers.

AQUABAC KEY POINTS

For a modern, efficient and sustainable laundry, suitable for small-capacity machines and confined spaces.

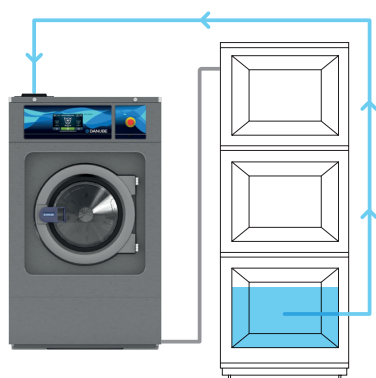
How is it controlled?

This compact version is ideal for small capacity machines and small spaces. It is controlled by the EASY TOUCH 2 control of the washer or barrier, and the filling can be configured automatically or manually.

Intuitive control thanks to the EASY TOUCH 2

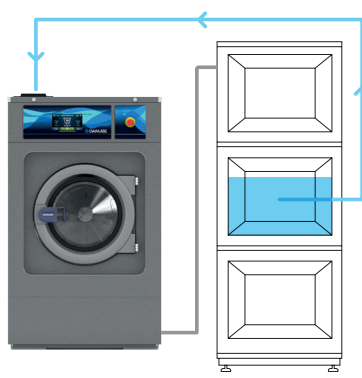
The ET2 control of each machine associated with the AQUABAC manages the tanks

- ✓ You can set the water inlets and outlets for filling and emptying the machine's drum.
- ✓ 2 water level sensors in each tank (maximum and minimum level).
- ✓ The water recovery system fills each tank via filling valves.
- ✓ You can create programs in washing machines to self-clean the tanks.



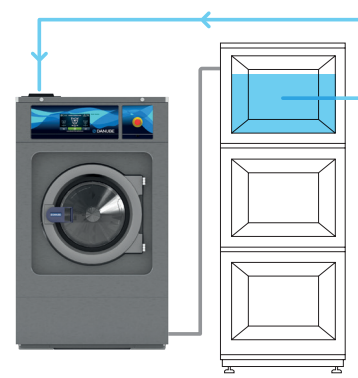
WATER SAVING TANK 1

Water from last rinse



WATER SAVING TANK 2

Water from first and/or second rinse



WATER SAVING TANK 3

Water from wash cycle for following pre-wash

AQUABAC XL & AQUABAC

TECHNICAL DATA

	AQUABAC XL	AQUABAC
Capacity of each tank	1000 Litres	80 Litres (per 1,2, or 3) 150 Litres (per 1,2, or 3)
Water inlet	1"	3/4"
Water outlet	1"	3/4"
Fumes outlet	70 mm	21 mm
Drain	1"	21 mm
Net dimensions (width x depth x height)	702 x 1.375 x 2.206 mm	80 l - T1 551 x 722,6 x 607,8
		80 l - T2 551 x 722,6 x 1022,8
		80 l - T3 551 x 722,6 x 1437,8
		150 l - T1 551 x 1272,6 x 607,3
		150 l - T2 551 x 1272,6 x 1022,3
		150 l - T3 551 x 1272,6 x 1437,8
Net weight	147 kg	80 l 60 kg (T1), 60 kg (T2), 80 kg (T3)
		150 l 60 kg (T1), 60 kg (T2), 80 kg (T3)
Voltage	230V I	230V I

ONNERA LAUNDRY FRANCE SAS
 3 rue Léonard de Vinci
 Parc d'Activités de Sologne - CS 10026
 41600 Lamotte-Beuvron - FRANCE
 Tél.: +33 (0)2 54 88 05 76
 Fax: +33 (0)2 54 96 89 04
 Hotline: +33 (0)2 54 88 83 22
 support@danube.fr
 SAV: +33 (0)2 54 88 83 65
 Logistique commandes:
 +33 (0)2 54 88 05 76
 info.olf@onneragroup.com



www.danube-international.com

MORE INFO:



ONNERA GROUP