

# CSR BOOKLET

Sustainable  
solutions and  
innovations in  
laundry



 **DANUBE**

# INDEX

01.

Introduction

02.

Company policy

03.

Sustainable solutions and  
innovations in laundry

04.

Environmental strategy

05.

Social strategy





# 01. Introduction



What is CSR?  
Danube's vision



# WHAT IS CSR?

Corporate Social Responsibility (CSR) allows the combination of economic performance, social performance and environmental performance. It is defined by the European Commission as **“the voluntary integration by companies of social and environmental concerns into their commercial activities and relationships with stakeholders”**

It is a beneficial approach for companies to be sustainable and profitable by relying on 3 fundamental points:



Economic



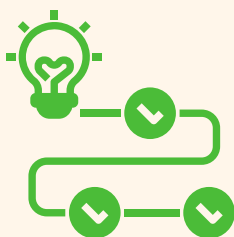
Social



Environmental

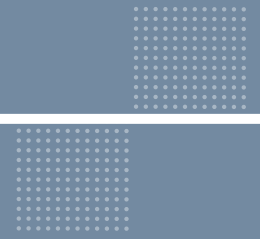
## Main benefits for the company:

- ✔ Ensure the sustainability of the business and save costs,
- ✔ Promote the quality of work life by anticipating risks and identifying opportunities,
- ✔ Attract talents, engage employees in a project, and improve performance by giving it meaning,
- ✔ Retain customers, partners, and suppliers.



**CSR** is about seeking to develop more ethical and more sustainable practices in operations to contribute to environmental challenges.

# DANUBE'S VISION

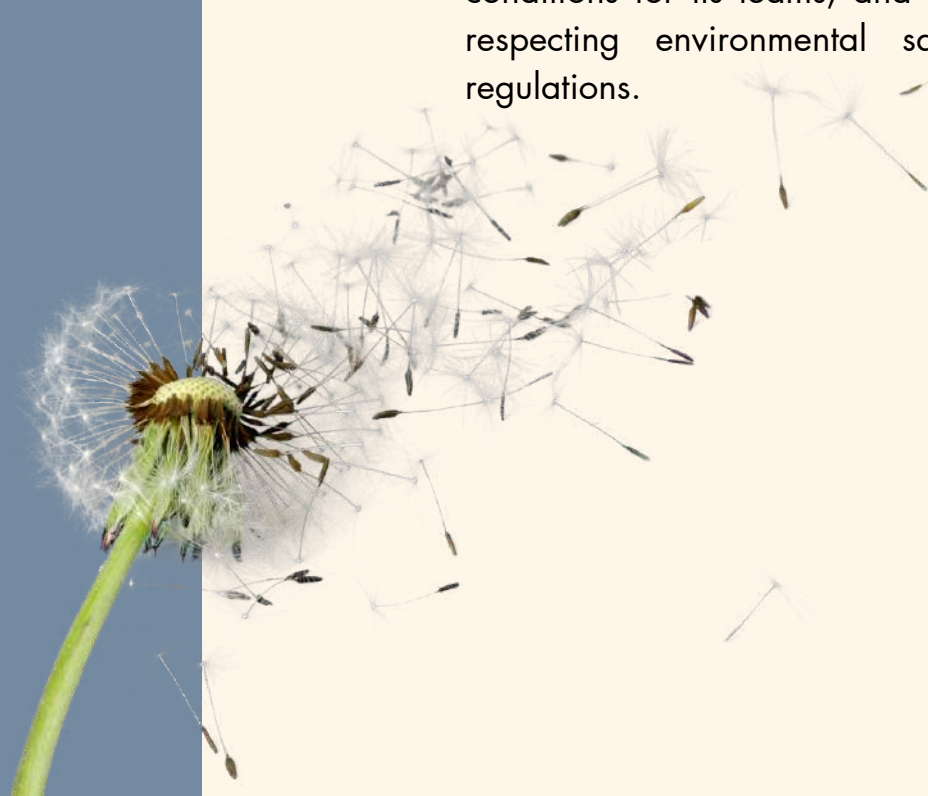


Since 1947, Danube International has been dedicated to developing customer satisfaction. As a part of the ONNERA Group, the company continues its voluntary approach towards efficiency by:

- **Developing and continuously improving its products,**
- **Controlling and reducing consumption,**
- **Improving all practices and waste valorization,**
- **Seeking more efficient partners and suppliers for cost reduction, process control, and enhanced quality, safety and environmental responsiveness.**



Through this dynamic approach to progress, **Danube commits**, to continuous improvement in resource preservation, working conditions for its teams, and personalized customer support, respecting environmental safety, technical, and quality regulations.





## 02. Company policy



Certifications  
QSE policy  
Danube Eco  
Actions taken



# CERTIFICATIONS

Since 2016, Danube has committed to certification processes, to enhance its performance and establish effective management processes meeting customer expectations.

## ISO 9001 - QUALITY MANAGEMENT SYSTEM



This standard ensures the implementation of robust quality control processes, identifying and eliminating resource misuse, reducing waste, making operations more efficient, reducing costs, and strengthening customer trust.

## ISO 14001 - ENVIRONMENTAL MANAGEMENT SYSTEM



This standard outlines requirements for an environmental management system within the framework of sustainable development, based on voluntary continuous improvement.



# QSE POLICY

For the year 2024, **our guiding principles** through the action plan below are as follows:

- **Development of our sales volumes through:**
  - Enhancing the technical skills of our sales force
  - Strengthening our dealer network (development, skill enhancement...)
  - Showcasing our products and expertise through factory visits
- **Improvement of the product experience by:**
  - Enhancing the reliability and perceived quality of our products
  - Continuing to expand the range of manufactured products in the market
  - Continuing to improve services around the product (customer support, web training, tutorials...)
- **Ensuring workplace safety with:**
  - Fall protection on racks
- **Improvement of waste and energy management:**
  - Constantly improving all our practices to reduce environmental impacts and optimize waste valorization
  - Controlling and reducing our resource consumption
- **In the context of a fluctuating economic environment, we must continue to rely on our differentiating qualities :**
  - A human-sized company capable of adapting its products and services to the customer
  - Tailor-made support for sizing and implementation
  - Personalized customer support that takes into account customer requirements
  - Technologically advanced products (IoT, unique features...)
  - « Made in France » manufacturing
- **Our priority areas for improvement are:**
  - Working on our external costs by better managing our suppliers and diversifying our subcontracting panel
  - Working on our internal costs by better controlling our manufacturing processes and investing in innovative production tools
  - Reducing our production lead times by seeking a more efficient organization for better control of quality, safety, and the environment





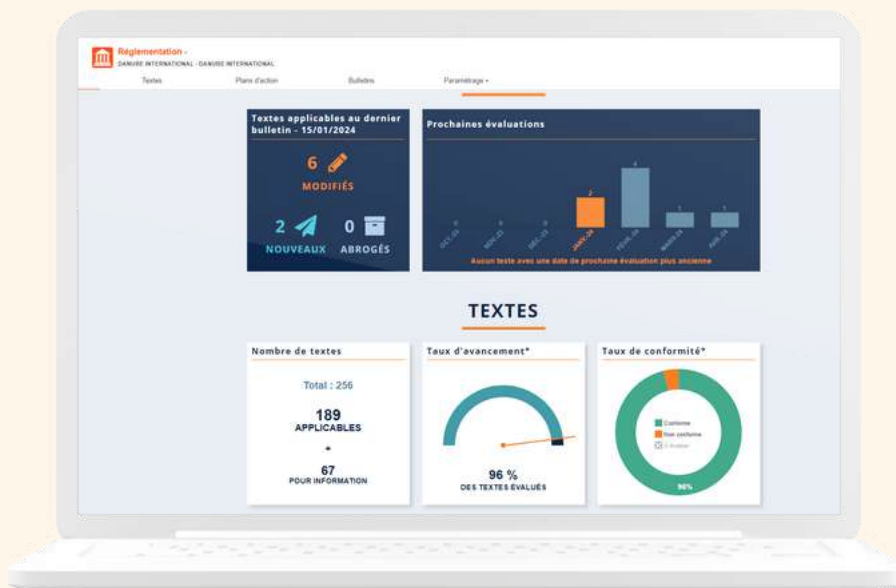
# DANUBE ECO

**Danube has established** an ecological committee, comprising employees from various company positions, providing a comprehensive view of potential improvements across its services and a broader perspective on ecological transition.

This collaborative working group suggests a number of projects to the Management based on their feasibility and current or upcoming regulations.



A regulatory monitoring module identifies new applicable texts, defines necessary actions for compliance, and monitors all company action plans.



# ACTIONS TAKEN

In 2021, an energy audit was conducted by Diagecoflux engineers with the aim of saving and improving energy and water resources.

This led to an action plan for good practices (presence sensors, non-polluting mobility), waste management (batteries, sorting containers), and resource management (compressor clock).

Other ideas implemented with Danube Eco include:

01. specific economic programs for washing machines testing benches, to avoid wasting clean water unnecessarily.

02. Ink cartridges recovery with a local partner.

03. paper and coffee capsules recovery with a nearby client.

04. LED lighting in relevant spaces.





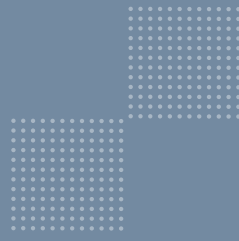
# 03. Sustainable solutions and innovations in laundry



Efficiency in products  
Consumption control  
Technological innovations  
Sustainable tools



# EFFICIENCY IN PRODUCTS



**Danube** emphasizes efficiency and environmental commitment, developing a range of machines with the latest technologies to ensure low consumption throughout their operational life.



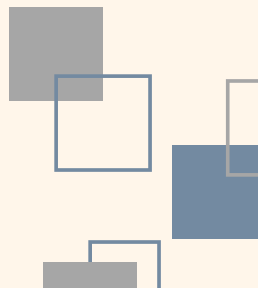
Saving and good use of water to avoid waste.



Energy optimization for greater savings.



Proper use of detergents for less residues.





# CONTROLLED CONSUMPTION



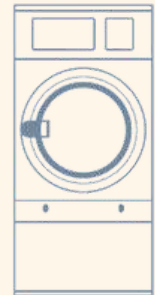
## Reducing environmental impact through controlled consumption:



- Optimization of heating time by reducing inert volumes between vat and drum.
- High G factor for low residual moisture and reduced drying time.
- Weighing system and Eco programs for precision and less consumption.
- Programming water and detergents savings levels for reduced residues.
- Water recovery tanks for up to 70 % savings through rinse bath recovery.

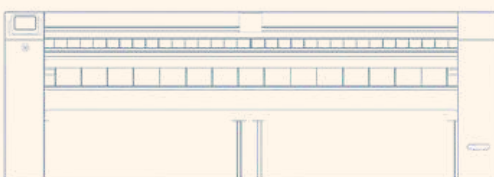
## Reducing cycle times and optimizing air :

- Hot air recovery system reduces drying time and energy consumption.
- Intelligent humidity control: automatic cycle stop.
- Thermal insulation and double-glazed door: no heat loss.
- Heat pump dryer: up to 60 % less consumption than an equivalent electric model.



## Optimizing energy consumption while ensuring productivity:

- Radiant gas burner: stability, efficiency, precision
- Residual humidity control: automatic regulation of ironing speed, optimized time, saved energy.
- High Production System: automatic adjustment of feeding and ironing speed, energy savings.

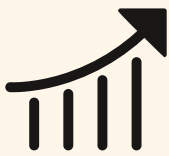


# TECHNOLOGICAL INNOVATIONS

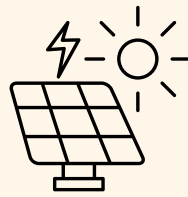


Special attention is dedicated to R&D.

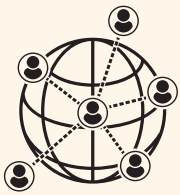
The engineering office relies on the following 5 fundamental concepts to design the machines, seeking and using all the latest technologies to fulfil these specifications.



**Performance**



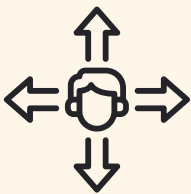
**Energy efficiency**



**Connectivity**



**Robustness**



**Versatility**





# SUSTAINABLE TOOLS

Danube aims to raise awareness among clients and partners about environmental issues, providing them with information and management tools for more adapted processes and significant cost reduction.

## Laundry Iceberg :



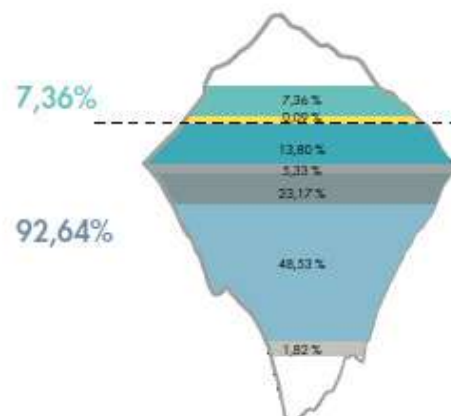
Danube pays attention to the invisible part of the iceberg in a laundry operation. The Iceberg tool calculates and studies machine consumption, allowing the selection of the most suitable model based on requirements.

## Appropriated models, controlled consumption

### WASHING

Description	%	
Machine purchase cost	7,27 %	7,36%
Scrapping	0,09 %	
Water	13,80 %	92,64 %
Operating electricity	5,33 %	
Heating energy	23,17 %	
Detergents	48,53 %	
Maintenance	1,82 %	

A water saving of up to 70% can be achieved with the AGUABAC XI, which is not counted in the iceberg.

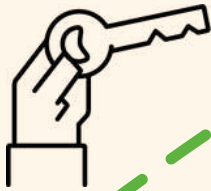


# SUSTAINABLE TOOLS

## Danube Online IoT :



Connecting Danube machines to IoT provides the ease of managing laundry, controlling machines, and supervising activities remotely, optimizing time, reducing costs, and ensuring efficiency.



**Owner:** machine control and incident resolution.



**After sales service:** avoiding unnecessary travel and enhancing responsiveness

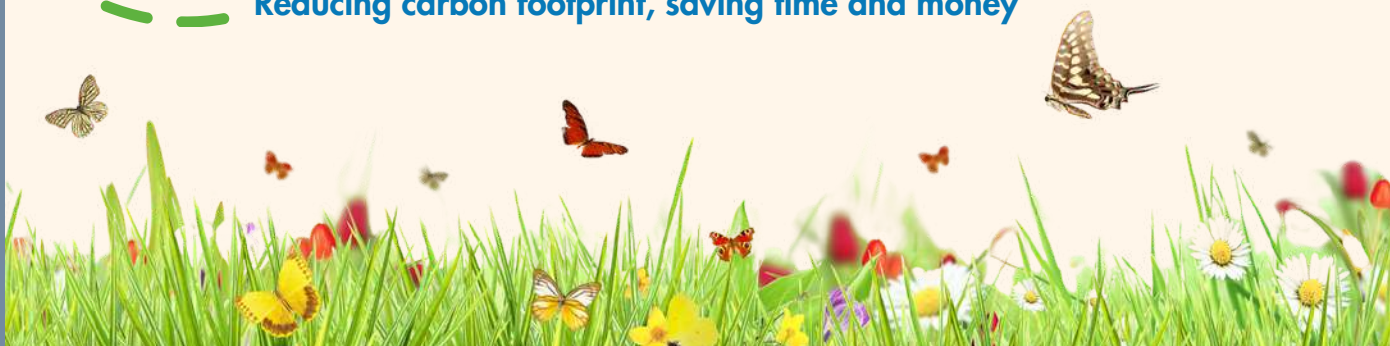


**Dealer:** managing the machine fleet



**Chemical partners:** telemetry of programs and adjustment of products

**Reducing carbon footprint, saving time and money**



# 04. Environmental strategy



Digitalization of documents  
Recycling  
Waste valorization  
Carbon footprint



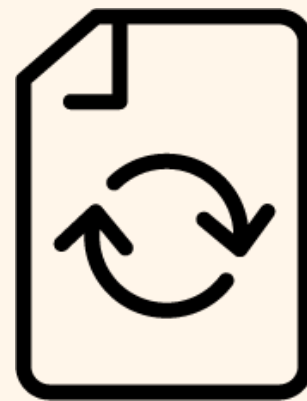




# DIGITALIZATION OF DOCUMENTS

Paper manufacturing has serious consequences despite strict environmental standards: it requires large quantities of water and energy as well as chemicals.

To limit environmental impact, Danube has digitized most documents.



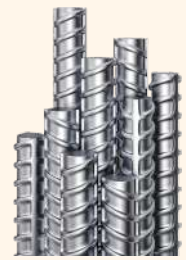
- Danube has made available on its website, in the dedicated area, and on the Onnera internal platform, all documents for marketing and technical support.
- All quotes, delivery notes, invoices, etc. are dematerialized, and spare parts orders are placed on the e.commerce platform to reduce management costs.
- When this is not possible, the paper used is recovered for recycling.





# RECYCLING

**98,3 %** of our machines materials are **recyclable**.



Danube **contributes to a recycling organization** for the recovery and valorization of end-of-life machines.

**ecosystem**

**Danube is committed** to designing and/or using packaging for its machines that does not waste raw materials and generates as little waste as possible.

Custom-made wooden maritime packaging is used to minimize waste.

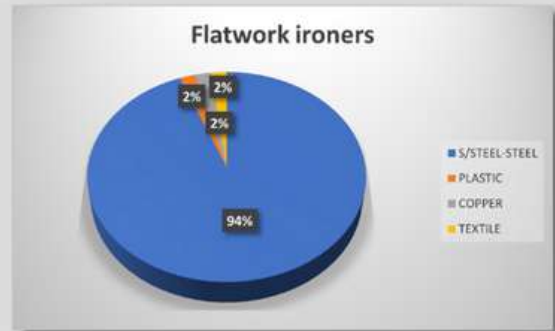


# WASTE VALORIZATION



Danube valorizes waste from its activities and those of its clients, managing and sorting waste such as cardboard, stainless steel, wood, and steel.

## Percentage of recyclable elements in our machines



## Recycled materials after manufacturing cycles

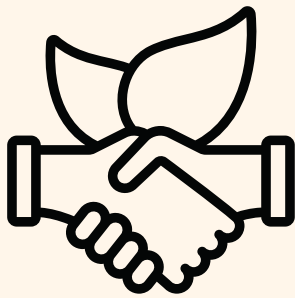




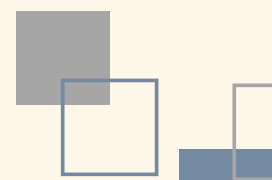
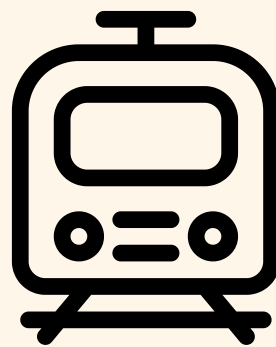
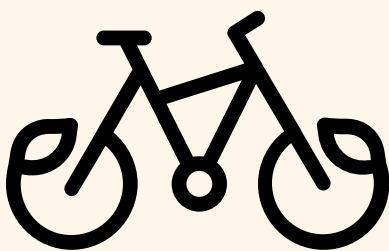
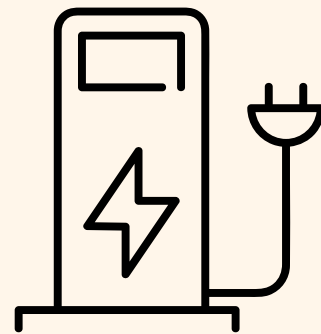
# CARBON FOOTPRINT



**Danube favors** local businesses and stakeholders when selecting suppliers and service providers.



Where possible, **Danube encourages** non-polluting mobility for employees with bikes shelter, electric charging point and financial contributions to railway subscriptions.



## 05. Social strategy



Working conditions  
Safety and employee health  
Professional integration of  
young people  
Equal opportunities and skills

# WORKING CONDITIONS

To facilitate communication and reduce physical travel, all employees of the Onnera group, including Danube, benefit from the TEAMS communication tool.



Commercial, accounting, and logistical documents that can be managed electronically are handled for better comfort and greater efficiency.

The Group's processes are managed by a common ERP to facilitate exchanges and speed of action.

Office workstations are equipped with two screens to minimize printing and improve comfort in daily tasks associated with each position.






# SAFETY AND EMPLOYEE HEALTH

To ensure the quality of its products and services, **Danube has implemented** a quality policy through a dedicated service to supervise, organize and maintain the Quality Management System (QMS).

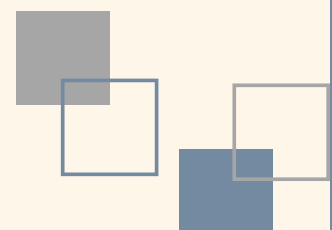


- 
- Posters reminding employees of basic ergonomics and safety rules
  - Best practices for the use and maintenance of production tools or the handling of loads
  - Rules regarding appropriate attire and Personal Protective Equipment (PPE) for each relevant position
  - Organization of production areas to improve the environment and adapt working methods
  - Protocols and procedures tailored to each position
  - Monitoring of the safety document

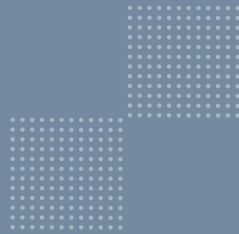


In addition, Danube offers relevant employees training or roundtable discussions on-site or virtually in the areas of safety and health:

- First Aid Training,
- Harrasment prevention training,
- Information on Mental Health First Aid.



# PROFESSIONAL INTEGRATION OF YOUNG PEOPLE



For over 20 years, **Danube has been supporting** the professional integration of young people in training at various levels, including apprentices and interns, in different departments, primarily in technical, production, or engineering roles.

A significant number of employees have emerged from this initiative and have chosen to build their careers within the company.



Welding, wiring



Ingeneering, quality



Maintenance, After sales service.

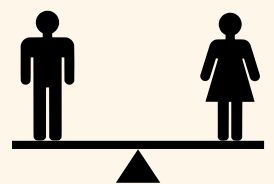
# EQUAL OPPORTUNITIES AND SKILLS

**Danube emphasizes** that all employees enjoy equal opportunities at work, without distinctions based on individual characteristics.



**Danube commits to avoiding** any discrimination based on:

- age
- gender
- origin
- religion
- sexual orientation



**Danube pledges to strengthen** the employability and professional potential of its employees through training or internal mobility.







 **DANUBE**  
ONNERA GROUP

Parc d'Activités de Sologne, 41600 Lamotte Beuvron France  
tél +33 2 54 88 05 76  
info@danube-international.com

[www.danube-international.com](http://www.danube-international.com)

Find us on social media

