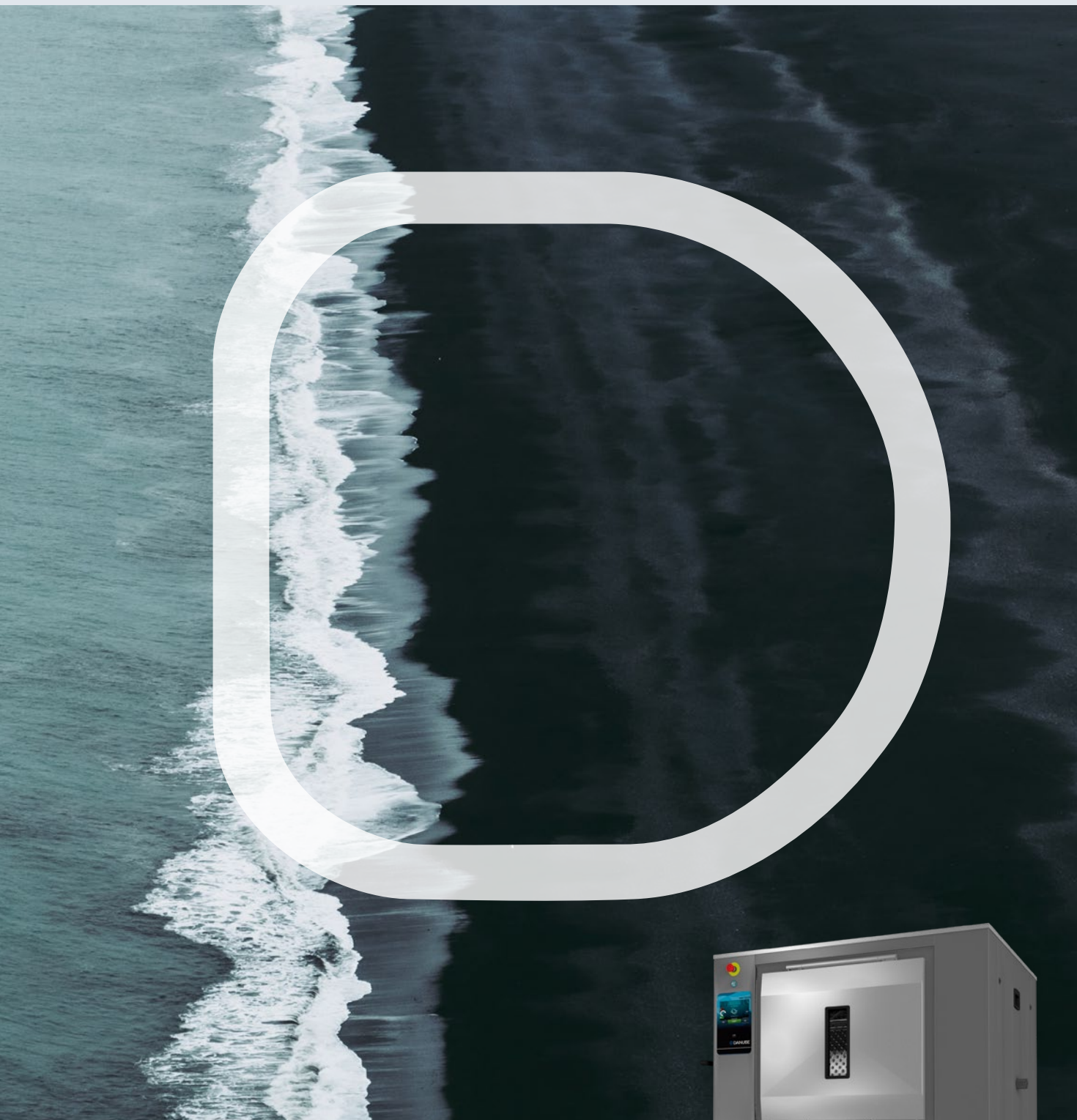


# BARRIER WASHERS

INTERACTIVE  
CATALOGUE



# BECAUSE HYGIENE MUST ALWAYS BE AN ABSOLUTE PRIORITY

Solutions to avoid cross contamination in hospitals, clean rooms, nursing homes or healthcare facilities do exist with barrier washers extractors. Since their first development by Danube International in 1984, they have been continually improved by our engineering dept.

DANUBE range of barrier washers strictly complies with RABC standards offering safety, ergonomics and efficiency in the best possible working conditions. Specially designed to be located on either side of a partition wall thanks to their 180° opposite doors, they provide a highly valued solution to prevent contamination between soiled and clean linen.

Our barrier models come in different ranges and various capacities:

- MED-ET2 with 16-22 kg capacities
- DBW-ET2 with capacities from 27 to 70 kg and a new available option: pullman drum for models from 27 to 50 kg
- AS-ET2 with Pullman drum as standard in 90 kg.

All the ranges offer Danube Online communication as standard with ET2 control.



# RANGE OF MODELS

Passthrough models with  
180° opposed doors.

## MEDICAL BARRIER WASHER

CONTROL TYPE	HEATING	CAPACITY	
		16 kg	22 kg
EASY TOUCH 2 Microprocessor	Electric, steam or dual heating	MED-16 ET2	MED-22 ET2

## BARRIER WASHER 180°

CONTROL TYPE	HEATING	CAPACITY			
		27 kg	35 kg	50 kg	70 kg
EASY TOUCH 2 Microprocessor	Electric, steam or dual heating	DBW-27 ET2	DBW-35 ET2	DBW-50 ET2	DBW-70 ET2
<b>NEW</b> EASY TOUCH 2 Microprocessor	Electric, steam or dual heating	DBW-27 ET2 PULLMAN DRUM OPTION	DBW-35 ET2 PULLMAN DRUM OPTION	DBW-50 ET2 PULLMAN DRUM OPTION	N/A

## BARRIER WASHER - PULLMAN 180°

CONTROL TYPE	HEATING	CAPACITY
		100 kg
EASY TOUCH 2 Microprocessor	Electric or steam	AS-100 ET2

HEATING CODES: E = ELECTRIC, S = STEAM, ES = DUAL HEATING ELECTRIC/STEAM, HW = HOT WATER

## RANGE 16-22 KG

## RANGE 27-35-50-70 KG



### MED HIGH SPIN

#### G FACTOR 350 SOFT MOUNTED

- ✓ Pass through barrier washer extractors, soft mounted, G factor 350, extraction speed 1000 RPM.
- ✓ Easy installation, no need of anchoring.
- ✓ Horizontally suspended drum by two axles.
- ✓ Outer casing in grey skinplate, top panel in stainless steel.
- ✓ Vat and drum in AISI 304 stainless steel.
- ✓ ET2 touch screen 7", control on dirty side. Double display as option.
- ✓ **Danube Online - IoT connectivity standard.**
- ✓ **Electric or steam heating. Dual heating model available.**
- ✓ 2 water inlets.
- ✓ 8 signals for dosing pumps, ready to be connected to dosing pumps.
- ✓ Central drain.
- ✓ Automatic positioning of drum.
- ✓ **End of cycle light alarm as option.**

### DBW HIGH SPIN

#### G FACTOR 375 SOFT MOUNTED

- ✓ Pass through barrier washer extractors, soft mounted, G factor 375, extraction speed 920 RPM.
- ✓ Easy installation, no need of anchoring.
- ✓ Horizontally suspended drum by two axles.
- ✓ Outer casing in grey skinplate, top panel in stainless steel.
- ✓ Vat and drum in AISI 304 stainless steel.
- ✓ ET2 touch screen 7", double display.
- ✓ **Danube Online - IoT connectivity standard.**
- ✓ **Electric or steam heating. Dual heating model available.**
- ✓ 3 water inlets.
- ✓ 8 signals for dosing pumps, ready to be connected to dosing pumps.
- ✓ Central drain.
- ✓ Automatic positioning of drum with electric brake.
- ✓ **End of cycle light alarm as option.**
- ✓ **New pullman drum partition as option for models from 27 to 50 kg.**

## RANGE PULLMAN

---



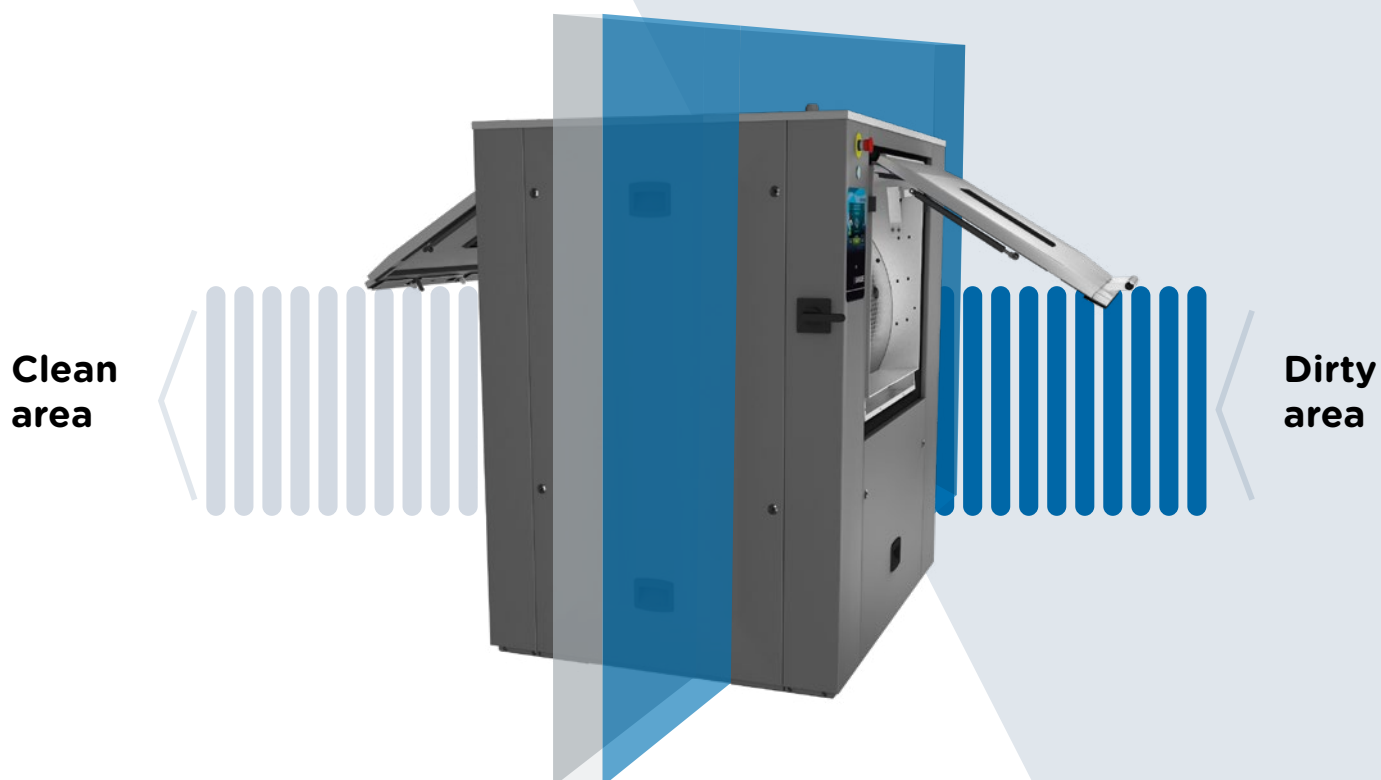
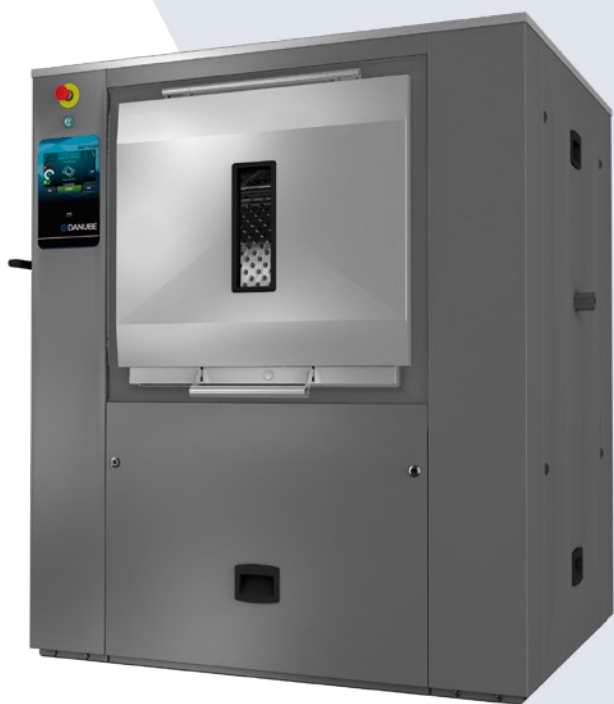
## PULLMAN HIGH SPIN

### G FACTOR 325

- ✓ Pass through barrier washer extractors, soft mounted, G factor 325, extraction speed 750 RPM.
- ✓ Easy installation, no need of anchoring.
- ✓ Horizontally suspended drum by two axles, Pullman partition.
- ✓ Vat and drum in AISI 304 stainless steel.
- ✓ ET2 touch screen 7", double display.
- ✓ **Danube Online - IoT connectivity standard.**
- ✓ **Electric or steam heating. Dual heating as option.**
- ✓ 3 water inlets.
- ✓ Double drain.
- ✓ 8 signals for dosing pumps, ready to be connected to dosing pumps.
- ✓ Central drain.
- ✓ Automatic positioning of drum with electric brake.
- ✓ Needs compressed air for door opening (air pressure 4-7 bar,  $\varnothing$  8 mm, air consumption 10 NI/min).
- ✓ **End of cycle light alarm as option.**

# A PERFECT COMPLIANCE

WITH THE MOST DEMANDING STANDARDS





## EASY TOUCH 2

- User friendly and fully programmable **7" EASY TOUCH 2**.
- **USB Connection.** Free software online for programming, telemetry, data analysis...
- **Danube Online communication standard** - Free and easy connection to IoT.
- **Wet Cleaning, telemetry as standard**
- Customization of programs according to each need.
- **Screen on both sides of the machine:** touch operated on dirty side, only displaying on clean side (standard on DBW and PULLMAN models, optional on MED).
- **8 dosing signals as standard + optional 6 extra dosing signals.**
- **37 available languages.**



## ERGONOMICS

- **Huge doors opening** making easier loading and unloading operations, biggest opening on the market (DBW35: drum 640x515 mm - Vat 700 x 650 mm).
- **User friendly drum opening by push button.**
- **Height of loading** (door bottom): 800 mm.
- Plinths for loading height at 850 mm as option.
- **Pullman drum option** (DBW models from 27 to 50 kg).



## EFFICIENCY

- **Water saving:** Possibility of configuring three levels of savings.
- **Intelligent loading (standard):** automatic adjustment of water and detergent consumption.
- **Optimal loading.** Manual indication of the load weight.
- **Water Recovery tanks ready.** Ready to be connected to water recovery tanks: AQUABAC & New AQUABAC XL.
- **Low water consumption.**
- **High G-FACTOR:** Reduced residual moisture, reduced drying time.
- **Automatic weighing system** on feet as option.



## CONNECTIVITY

- **Danube Online - IoT connectivity standard:** machine monitoring, error warning, remote desk and data recovery for technicians and maintenance, software updates...
- **Management of laundry:** Danube IoT solution allows you to manage your laundry, get statistics, telemetry, laundry monitoring...



## EASY MAINTENANCE

- **Electric part on the left side, mechanics on the right side, connections on the top:** Easy access to all components, easier to connect, all connections protected from water and detergents.
- **Central drain as standard:** Easy installation.
- **Technical menu:** Statistics, alarms, autotest, data recovery for technicians and maintenance.
- **Many available options:**  
Side drain.  
Low steam pressure to enable installation of steam heated machines with very low pressure of steam on site.



## FEATURES

- **Double display** (DBW and Pullman models, optional on MED).
- **Automatic positioning of drum with motor brake** to make easier the loading and unloading operations (DBW and Pullman, optional brake on MED).
- **3 water inlets** (DBW and PULLMAN, optional on MED).
- **Grey skinplate outer casing and top panel in stainless steel,** easy to clean.
- **WET CLEANING:** equipped with all features to use Wet Cleaning programs (useful in nursing homes).
- Detergent box kit instead of standard dosing pumps ready.
- **Many available options:**  
Dual heating electric - steam: energy savings.  
2nd drain valve for water recovery.  
Titration valve.  
UPS kit to release drum brake in case of power failure.  
AISI 304 stainless steel outer casing.





# EASY TOUCH 2

## 37 languages

Available and easy to configure, thanks to DANUBE aim to be accessible to everyone..



## IoT - Danube Online

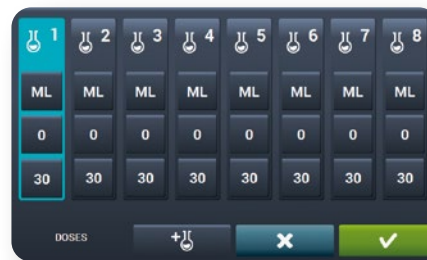
Offers feedback from the machines to the device through the cloud, about telemetry and statistics to be analyzed and to ensure maximum hygiene.

## Touch Screen 7"

Coloured touch screen:  
7" screen (on all models)  
Fully programmable: 8 preset programs, customization of programs according to each need.

## Wet Cleaning, telemetry as standard

Equipped with all features to use wet cleaning programs (useful in nursing homes)  
Adjustable washing speeds and temperatures  
Fully regulation of water levels  
8 dosing signals as standard + 6 extra as option



## USB connection

Software online free of charge for programming, telemetry, data analyses...







# FEATURES

## Outer casing in skinplate

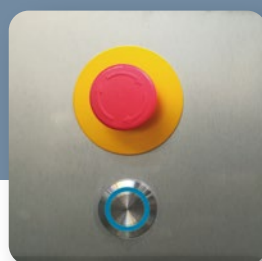
and top panel in stainless steel, easy to clean. As option, AISI 304 stainless steel outer casing

## 3 water inlets

DBW and Pullman models optional on MED

## Automatic positioning of drum with motor brake

to make easier loading and unloading operations.



## Other options

Detergent box kit (instead of pumps)  
Dual heating electric - steam: energy savings  
2nd drain valve for water recovery  
Titration valve



# EFFICIENCY

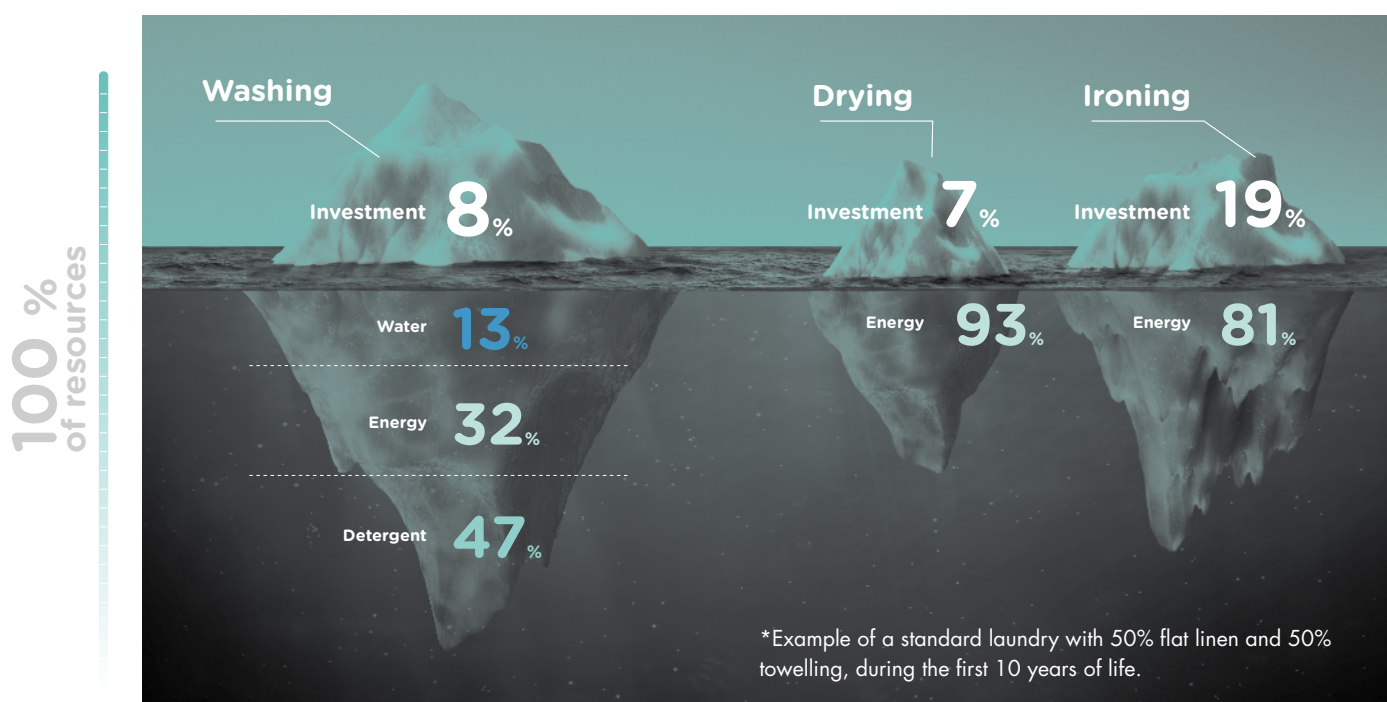
For laundries where process quality and energy and water savings are a priority, the new DANUBE barrier washers offer top performance and a renewed look to meet the needs of the most demanding customers.

Their advanced design has a great effect on energy efficiency and on saving water and chemicals, reducing operating costs and increasing the business productivity.

## High G-Factor reduces residual moisture and drying time

WATCH VIDEO

In a laundry, machinery is the tip of an iceberg. Danube pays a specific attention to the invisible part, to optimize resources throughout the life cycle of machines.



WATCH VIDEO



### Energy

Optimizing energy is an essential point in managing a laundry. Our machines have been designed with the objective to achieve greater energy savings.



### Water

The saving and good use of water is one of our main objectives so as not to waste it. Our washing machines offer an optimized design and programming as well as a unique accessory, the AQUABAC water recovery tanks to meet this goal.



### Chemicals

Our washing machines have been designed with features that facilitate and ensure the most appropriate use of chemicals, providing greater savings and better care of garments.



## Prepared to be connected to water recovery tanks

Danube barrier washers, with ET2 and double drain, can be connected to the AQUABAC system, which allows the water recovery, achieving important water and energy savings.



# AQUABAC

WATCH VIDEO

## New centralized tank for one or more machines, from 1 to 3 tanks of 1.000 liters

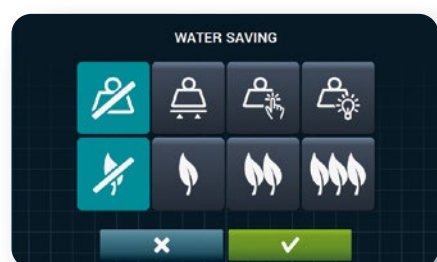


# AQUABAC XL

WATCH VIDEO

## Water Saving

3 possible levels of savings to reduce water, energy and detergents consumption based on the load.



**Energy Saving**  
**Time Saving**



# ERGONOMICS

As health and safety at work had become an important issue, our equipment is designed to be the most comfortable for users.



## Pullman drum for DBW-27-35-50 models

Makes easier the loading and unloading of linen of same type and optimizes handling to save time.

## Huge door opening

Making easier the loading and unloading operations, the biggest opening in the market.

Huge doors

**DBW 27** 542 x 650 mm

**DBW 35/50** 700 x 650 mm

**DBW 70** 1402 x 650 mm

**AS-100** 960x700 mm

## Ergonomic height of loading

(DBW: 800 mm, AS-100: 960 mm door base)



## Plinth for loading height at 850 mm door base

(DBW and MED models)

## User friendly drum opening by push button

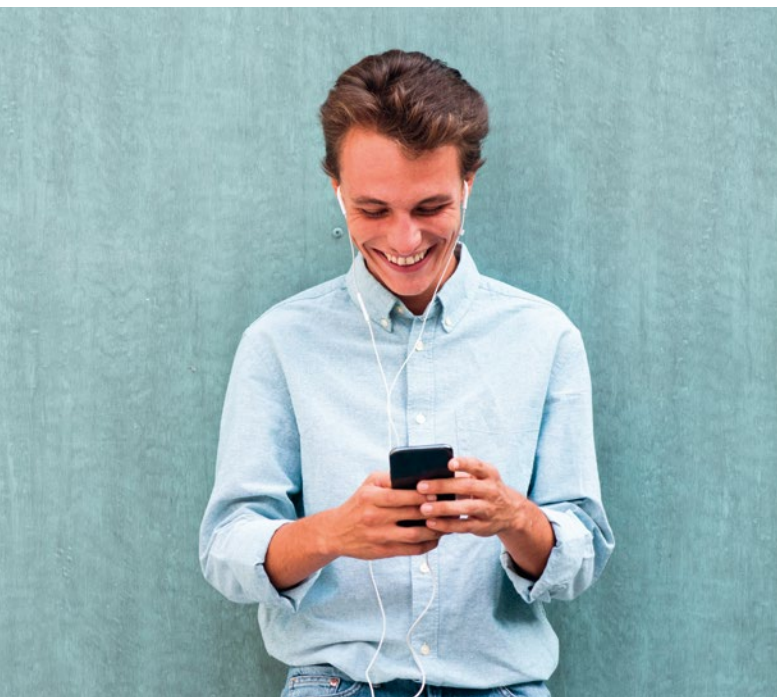






# CONNECTIVITY

A LOT OF ADVANTAGES :



## DANUBE ONLINE Standard

on all ranges equipped with ET2 control :  
free and easy connection to IoT



### Owners

- ✓ Improves usability, efficiency and comfort.
- ✓ Laundry control: configurable production reports, cycles, consumption, income, etc...
- ✓ Ensures the washing and drying processes, ensuring hygiene and disinfection, washing quality, etc...

**+ information + safety + control**



### Dealers

- ✓ Technological base for new facilities, renting, maintenance contracts, self-services, etc.
- ✓ Databases of installed machines, geographical distribution, models, etc...
- ✓ Greater added value of Danube machines for the customer.

**+ communication + usability + control**



### Chemical partners

- ✓ Management and creation of washing programs, online and offline.
- ✓ Ensures the washing and drying processes, ensure hygiene and disinfection, washing quality, etc.
- ✓ Troubleshooting and remote management.
- ✓ Telemetry of programs, complete information of all the programs carried out.

**+ information + ease + management**



### Technical service

- ✓ Improvement of customer service
- ✓ Improved processes, more efficient and lower costs, avoiding unnecessary trips.
- ✓ Remote troubleshooting, maintenance programs.
- ✓ Telemetry of programs, complete information of all the programs carried out.
- ✓ Access to technical documentation, videos, etc.

**+ information + support + efficiency**





# EASY MAINTENANCE

One of DANUBE concerns is to make life easier for our clients. That includes offering quality equipment and parts of reputed brands, which demand little maintenance.

## Easy access to components

Electric components on the left side, mechanic components on the right side, connections on the top. Easy access to all the components.

Easier to connect, all connections protected from water and detergents.

## Technical menu

Statistics, alarms, autotest, data recovery for technicians and maintenance.

## Central drain

Easy installation.

## Other options

Side drain.

Low steam pressure: to enable installation of steam heated washer with very low steam pressure on site.





## BARRIER WASHERS TECHNICAL DATA

	UNIT.	MED-16	MED-22	DBW-27	DBW-35	DBW-50	DBW-70	AS-100
<b>DRUM</b>								
Capacity 1:9	kg	18	25	30	39	54	78	100
Capacity 1:10	kg	16	22	27	35	49	70	90
Volume	l	158	220	266	347	489	694	900
Diameter	mm	633	633	800	800	800	800	1.050
Depth	mm	500	700	530	690	974	1.380	1.032
Number of compartments		1	1	1	1	1	2	2
Pullman drum		NO	NO	OPT	OPT	OPT	N/A	STD
<b>GENERAL DETAILS</b>								
Washing speed	r.p.m.	45	45	45	45	45	45	45
Spining speed	r.p.m.	1000	1000	920	920	920	920	750
G Factor	-	350	350	375	375	375	375	325
Double drain	-	OPT	OPT	OPT	OPT	OPT	OPT	STD
ET2 screen	-	7"	7"	7"	7"	7"	7"	7"
Double display		OPT	OPT	STD	STD	STD	STD	STD
Electric brake		OPT	OPT	STD	STD	STD	STD	STD
Plinth of height		OPT	OPT	OPT	OPT	OPT	OPT	N/A
3 water inlets		OPT	OPT	STD	STD	STD	STD	STD
<b>DOORS</b>								
Drum doors dimensions	mm	400x315	400x315	480x515	640x515	640x515	2x(640x515)	900x500
Vat doors dimensions	mm	455x415	455x415	542x650	700x650	700x650	1402x650	960x700
Height base door	mm	670	670	800	800	800	800	960
<b>POWER</b>								
Motor	kW	2,2	2,2	4	4	5,5	7,5	15
Electric heating	kW	12	18	18	27	36	45	60
Max. power (electric heating)	kW	14,2	20,2	22	31	41,5	52,5	75
Max. power (steam model)	kW	2,2	2,2	4	4	5,5	7,5	15
<b>CONNECTIONS</b>								
Water inlet	inch	3/4"	3/4"	3/4"	3/4"	1"	1"	1"
Steam inlet	inch	3/4"	3/4"	3/4"	3/4"	3/4"	3/4"	3/4"
Drain	inch	3"	3"	3"	3"	3"	3"	3"
Compressed air inlet	mm	N/A	N/A	N/A	N/A	N/A	N/A	8
<b>MACHINE DIMENSIONS</b>								
Length	mm	1.056	1.245	1.264	1.422	1.717	2.124	1.742
Width	mm	1.071	1.071	1.195	1.195	1.195	1.195	1.468
Height	mm	1.417	1.417	1.615	1.615	1.615	1.615	1.982
Net weight	kg	438	471	886	926	1.063	1.190	1.900
<b>PACKING DIMENSIONS</b>								
Width	mm	1.072	1.262	1.464	1.608	1.903	2.310	1.890
Depth	mm	1.102	1.102	1.300	1.300	1.300	1.300	1.540
Height	mm	1.530	1.530	1.720	1.720	1.720	1.720	2.150
Gross weight	kg	459	494	906	946	1.085	1.220	1.958
Volume	m³	1.81	2.13	3.27	3.60	4.26	5.17	6.26

\*DANUBE reserves the right to modify the technical data without notice.



DANUBE International  
Parc d'Activités de Sologne - CS 10026  
41600 Lamotte-Beuvron - FRANCE  
Tél.: +33 (0)2 54 88 05 76  
Fax: +33 (0)2 54 96 89 04  
Hotline: +33 (0)2 54 88 83 22  
[support@danube.fr](mailto:support@danube.fr)  
SAV: +33 (0)2 54 88 83 65  
Logistique commandes:  
+33 (0)2 54 88 05 76  
[info@danube-international.com](mailto:info@danube-international.com)

MORE INFO:

